



Professional Performance. Guaranteed.™

CONCRETE & MASONRY

DRYWALL

PAINT

TILE

PRODUCT CATALOG | 2011 – 2012



## A NEW DAY, A NEW MASTERPIECE

Some may see tradespeople — but at Goldblatt Tools, we see artists. Masters who work in concrete and mortar, paint and joint compound, dust and sweat. Channeling years of practice into every sweeping stroke and subtle movement, they can make a complicated project look deceptively simple.

You watch them work and you become inspired.

At Goldblatt Tools, we understand that inspiration. For more than 125 years, it has moved us to provide the finest hand-tools to meet the demands of master craftsmen as well as inspired homeowners.

There's a new attitude and confidence at Goldblatt Tools. You'll find it reflected in our new look and in every product we design, manufacture, and sell. You'll also find it in our exclusive Professional Performance Guarantee — because we believe putting a Goldblatt tool in your hand is the same as shaking ours.

Welcome to a new level of performance.  
Welcome to the new Goldblatt Tools.



CONCRETE & MASONRY (P1-P32)



DRYWALL (P33-P60)



PAINT (P61-P76)



TILE (P77-P96)





## PRO-GRIP HANDLE

### | ULTRA-LIGHT CONCRETE FINISHING TROWEL



- High carbon cross-ground face
- Bevel ground blade edges
- Lightest weight finishing trowel on the market

Part#	Size	Desc.	Handle Style
G06216	12" x 4"	Ultra-Light Finishing Trowel	Pro-Grip Handle
G06217	14" x 4"	Ultra-Light Finishing Trowel	Pro-Grip Handle
G06218	16" x 4"	Ultra-Light Finishing Trowel	Pro-Grip Handle
G06219	18" x 4"	Ultra-Light Finishing Trowel	Pro-Grip Handle
G06220	20" x 4"	Ultra-Light Finishing Trowel	Pro-Grip Handle



## PRO-GRIP HANDLE

### | STAINLESS STEEL FINISHING TROWEL



- High grade stainless steel blade
- Pro-Grip soft handle

Part#	Size	Desc.	Handle Style
G03463	12" x 5"	Finishing Trowel	Pro-Grip Handle



## PRO-GRIP HANDLE

### | STAINLESS STEEL POOL TROWEL



- Pro-Grip soft handle
- High grade stainless steel blade
- Shorter shank allows for more flexibility
- Round edges prevent surface gouging

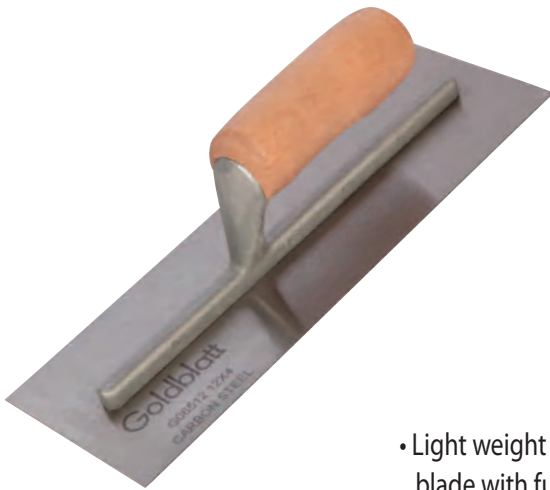
Part#	Size	Desc.	Handle Style
G06222	14" x 4"	Stainless Steel Pool Trowel	Pro-Grip Handle





## WOOD HANDLE

### | CONCRETE FINISHING TROWEL

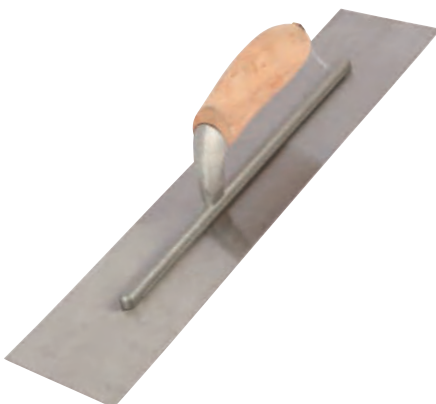


- Light weight aluminum mountings are locked to blade with fused rivets
- High carbon cross-ground face

Part#	Size	Desc.	Handle Style
G06512	12" x 4"	Finishing Trowel	Camel Back Wood Handle
G06517	14" x 4"	Finishing Trowel	Camel Back Wood Handle
G06522	16" x 4"	Finishing Trowel	Camel Back Wood Handle
G06527	18" x 4"	Finishing Trowel	Camel Back Wood Handle
G06531	20" x 4"	Finishing Trowel	Camel Back Wood Handle
G06532	20" x 5"	Finishing Trowel	Camel Back Wood Handle
G06112	12" x 4"	Finishing Trowel	Straight Wood Handle
G06122	16" x 4"	Finishing Trowel	Straight Wood Handle

## WOOD HANDLE

### | CONCRETE FINISHING "BURNER" TROWEL



- Strong, lightweight, rustproof aluminum mountings are locked to blade with fused rustproof studs
- Ultra-smooth camel back
- High carbon cross-ground face
- Narrow blade design for burnishing the surface



Part#	Size	Desc.	Handle Style
G03407	7-1/2" x 3"	"Midget" Finishing Trowel	Camel Back Wood Handle
G06511	12" x 3"	Finishing Trowel	Camel Back Wood Handle
G06516	14" x 3"	Finishing Trowel	Camel Back Wood Handle
G06521	16" x 3"	Finishing Trowel	Camel Back Wood Handle



## DIY FINISHING TROWEL

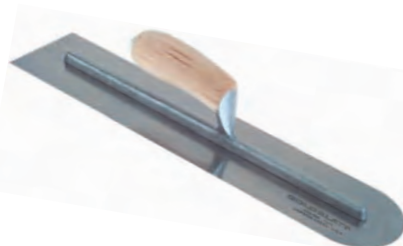


- Carbon steel
- Lightweight aluminum tang
- Wood Handle

Part#	Size	Desc.	Handle Style
G03910	11" x 4-1/2"	DIY Finishing Trowel	Wood Handle
G06910	12" x 4"	DIY Finishing Trowel	Wood Handle
G06911	14" x 4"	DIY Finishing Trowel	Wood Handle
G06912	16" x 4"	DIY Finishing Trowel	Wood Handle

## CAMEL BACK WOOD HANDLE

### | ROUND/FLAT CONCRETE FINISHING TROWEL



- Strong, lightweight, rustproof aluminum mountings are locked to blade with fused rustproof studs
- Ultra-smooth camel back handle or Pro-Grip soft handle
- High carbon cross-ground face Ideal for pools or slabs without leaving trowel lines

Part#	Size	Desc.	Handle Style
G06221	16" x 4"	Round/Flat Finishing Trowel	Pro Grip Handle
G06185	16" x 4"	Round/Flat Finishing Trowel	Camel Back Wood Handle
G06187	20" x 4"	Round/Flat Finishing Trowel	Camel Back Wood Handle



## CAMEL BACK WOOD HANDLE

### | STAINLESS STEEL POOL TROWEL



- High grade stainless steel blade
- Ultra-smooth camel back wood handle
- Shorter shank allows for more flexibility
- Round edges prevent surface gouging

Part#	Size	Desc.	Handle Style
G06174	10" x 4"	Stainless Steel Pool Trowel	Camel Back Wood Handle
G06176	12" x 4"	Stainless Steel Pool Trowel	Camel Back Wood Handle
G06177	14" x 4"	Stainless Steel Pool Trowel	Camel Back Wood Handle
G06179	16" x 4"	Stainless Steel Pool Trowel	Camel Back Wood Handle
G06195	20" x 5"	Stainless Steel Pool Trowel	Camel Back Wood Handle





## CAMEL BACK WOOD HANDLE

### | BLUE STEEL POOL TROWEL



- Flexible blue steel blade
- Ultra-smooth camel back wood handle
- Shorter shank allows for more flexibility
- Round edges prevent surface gouging

**Goldblatt**  
TOOLS



Part#	Size	Desc.	Handle Style
G06103	14" x 4"	Blue Steel Pool Trowel	Camel Back Wood Handle
G06104	16" x 4"	Blue Steel Pool Trowel	Camel Back Wood Handle
G06105	18" x 5"	Blue Steel Pool Trowel	Camel Back Wood Handle

## CALIFORNIA STYLE | FRESNO TROWEL



- High grade stainless steel blade
- 360 degree steel shank handle bracket

**Goldblatt**  
TOOLS



Part#	Size	Desc.	Handle Style
G16900	36" x 5"	California Style Fresno Trowel	Fresno Bracket
G16907	30" x 5"	California Style Fresno Trowel	Fresno Bracket

## THREADED ADAPTER

### | CONCRETE TAMPER ROLLERBUG



- High quality steel construction
- 1 3/4 male threaded adaptor
- Ideal for float, broom, trowel, exposed aggregate, or two course work
- Does not include handle

**Goldblatt**  
TOOLS



Part#	Size	Desc.
G16652	36"	Rollerbug® Concrete Tamper Threaded Adaptor



## WOOD HANDLE | CONCRETE PLACER

**Goldblatt**  
TOOLS



- Made of 12 gauge steel or aluminum
- U-Rib stiffening channel along blade
- All welded construction
- 54" wood handle



Part#	Desc.	Handle Style
G16119	Steel Concrete Placer - with Hook	Wood Handle
G16103	Aluminum Concrete Placer - with Hook	Wood Handle
G16109	Steel Concrete Placer - no Hook	Wood Handle
G16117	Placer Handle	Wood Handle

## ALUMINUM | ASPHALT LUTE

**Goldblatt**  
TOOLS



- High quality aluminum construction
- Includes handle



Part#	Desc.
G07839	Aluminum Asphalt Lute with handle

## WOOD HANDLE | WIRE TWISTER

**Goldblatt**  
TOOLS



- High quality steel construction
- Pistol grip wood handle
- Built for long life and heavy use



Part#	Desc.	Handle Style
G09312	Wire Twister	Wood Handle

## WOOD HANDLE | FRESNO HANDLE



- 6' wood handle
- Heavy duty steel ferrule and clevis



Part#	Size	Desc.
G16283	6ft.	Wood Handle with Steel Fresno Clevis

## THREADED ALUMINUM HANDLE

### | EXTENSION HANDLE



- Universal 1-3/4 in. male and female threading
- High grade aluminum construction



Part#	Size	Desc.
G16670	6ft. x 1 1/4"d	Threaded Aluminum Extension Handle
G16326	6ft. X 1 3/4"d	Threaded Aluminum Extension Handle
G16327	8ft. X 1 3/4"d	Threaded Aluminum Extension Handle
G16328	10ft. X 1 3/4"d	Threaded Aluminum Extension Handle

## SNAP-IN ALUMINUM HANDLE

### | EXTENSION HANDLE



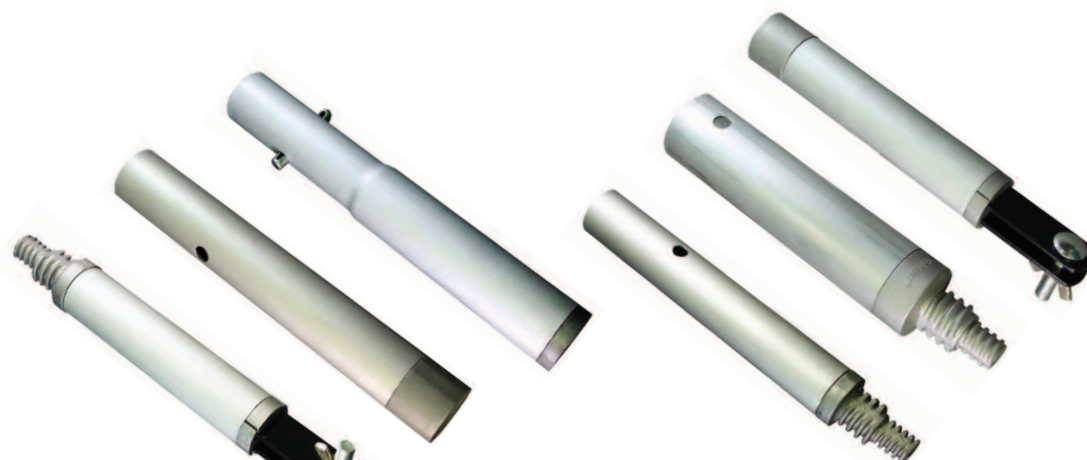
- 1-3/4 in. or 1-3/8 in. diameter
- High grade aluminum construction



Part#	Size	Desc.
G16334	6ft. x 1 3/8"d	Snap-in Aluminum Extension Handle
G16335	8ft. X 1 3/8"d	Snap-in Aluminum Extension Handle
G16336	10ft. X 1 3/8"d	Snap-in Aluminum Extension Handle
G16289	6ft. X 1 3/4"d	Snap-in Aluminum Extension Handle
G16330	8ft. X 1 3/4"d	Snap-in Aluminum Extension Handle
G16331	10ft. X 1 3/4"d	Snap-in Aluminum Extension Handle



## ALUMINUM | THREADED ADAPTORS



- Universal 1-3/4 in. male and female threading
- Used with 1-3/8 in. or 1-3/4 in. snap-in handles
- High grade aluminum construction

Part#	Size	Desc.
G16349		Male Threaded to Fresno - Aluminum
G16350		Female Threaded to Fresno - Aluminum
G16345	1-3/4"	Female Threaded to 1 3/4" Female Snap-In - Aluminum
G16282	1-3/4"	Male Threaded to 1 3/4" Female Snap-In - Aluminum
G16347	1-3/8"	Female Threaded to 1 3/8" Female Snap-In - Aluminum
G16346	1-3/8"	Male Threaded to 1 3/8" Female Snap-In - Aluminum
G16297	1-3/8"	Handle Adaptor
G16676	1-3/8"	Bull Float Handle Socket - 2 Hole
G16677	1-3/8"	Bull Float Handle Socket - 4 Hole

## ALUMINUM | SNAP-IN ADAPTORS



- Used with 1-3/8 in. or 1-3/4 in. snap-in handles
- High grade aluminum construction

Part#	Size	Desc.
G16348	1-3/8"	Snap-in to Fresno - Aluminum
G16295	1-3/8"	Snap-in to Broom/Fresno - Aluminum
G16296	1-3/8"	Snap-in to Threaded Broom - Aluminum



## ALUMINUM | POSI-LOCK FRESNO BRACKET

**Goldblatt**  
TOOLS



- Designed for use with fresno trowel and threaded extension handles
- Cast aluminum construction



Part#	Desc.
G16665	Posi-Lock Fresno/Broom Bracket - Aluminum

## ALUMINUM | UNIVERSAL BRACKET

**Goldblatt**  
TOOLS



- Cast aluminum construction
- Designed for use with 4-hole bull float
- Used to connect Goldblatt Bull Float bracket



Part#	Desc.
G16291	Universal 4 and 2 Hole Adaptor Bracket - Aluminum

## ALUMINUM | HUSTLER BULL FLOAT BRACKET

**Goldblatt**  
TOOLS



- Rugged lightweight aluminum
- Blade pitch controlled by turning handle
- Two bolt mounting bracket  
(Universal bracket required for 4 bolt floats)
- Eliminates bending & lifting



Part#	Desc.
G16290	Hustler Bull Float Bracket - Aluminum

## THREADED ADAPTOR

### | HEAVY DUTY MAGNESIUM BULL FLOAT



- Heavy duty magnesium construction
- 4 rib design for increased strength
- Threaded 4-hole handle bracket included

Part#	Size	Desc.
G16302	48" x 8"	Heavy Duty Magnesium Bull Float - Threaded Adaptor



## THREADED ADAPTOR

### | ROUND END MAGNESIUM BULL FLOAT



- Round end magnesium bull float
- Magnesium construction
- Threaded 4-hole handle bracket included

Part#	Size	Desc.
G16303	48" x 8"	Round End Magnesium Bull Float- Threaded Adaptor



## THREADED ADAPTOR

### | LIGHT WEIGHT MAGNESIUM BULL FLOAT



- Magnesium construction
- Threaded 2-hole handle bracket included

Part#	Size	Desc.
G16305	42" x 8"	Light Weight Magnesium Bull Float - Threaded Adaptor
G16306	48" x 8"	Light Weight Magnesium Bull Float - Threaded Adaptor





## PRO-GRIP HANDLE

### CAST MAGNESIUM HAND FLOAT

**Goldblatt**  
TOOLS



- Pro-Grip soft handle
- Cast out of high quality magnesium
- Tapered thin blade for fitting into tight areas
- Rounded edges

Part#	Size	Desc.	Handle Style
G06431	16" x 3-1/2"	Cast Magnesium Float	Pro-Grip Handle

## PRO-GRIP HANDLE

### EXTRUDED MAGNESIUM HAND FLOAT

**Goldblatt**  
TOOLS



- Pro-Grip soft handle
- Extruded out of high quality magnesium
- Tapered thin blade for fitting into tight areas
- Rounded edges

Part#	Size	Desc.	Handle Style
G06432	16" x 3-1/2"	Extruded Magnesium Float	Pro-Grip Handle

## PRO-GRIP HANDLE

### ROUND END MAGNESIUM HAND FLOAT

**Goldblatt**  
TOOLS



- Pro-Grip soft handle
- Extruded out of high quality magnesium
- Tapered thin blade for fitting into tight areas
- Rounded edges

Part#	Size	Desc.	Handle Style
G06434	16" x 3-1/2"	Extruded Magnesium Float - Round End	Pro-Grip Handle



## WOOD HANDLE

### | CAST MAGNESIUM HAND FLOAT



- Ultra-smooth wood handle
- Cast out of high quality magnesium
- Tapered thin blade for fitting into tight areas
- Rounded edges

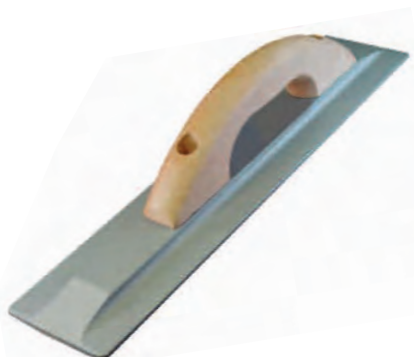
Part#	Size	Desc.	Handle Style
G06150	16" x 3-1/2"	Cast Magnesium Float	Wood Handle
G06164	16" x 3"	Cast Magnesium Float - Thin Line	Wood Handle

**Goldblatt**  
TOOLS



## WOOD HANDLE

### | EXTRUDED MAGNESIUM HAND FLOAT



- Ultra-smooth wood handle
- Extruded out of high quality magnesium
- Tapered thin blade for fitting into tight areas
- Rounded edges

Part#	Size	Desc.	Handle Style
G06410	16" x 3-1/2"	Extruded Magnesium Float	Wood Handle
G06411	20" x 3-1/2"	Extruded Magnesium Float	Wood Handle
G06412	24" x 3-1/2"	Extruded Magnesium Float	Wood Handle

**Goldblatt**  
TOOLS



## WOOD HANDLE

### | EXTRUDED MAGNESIUM HAND FLOAT



- Ultra-smooth high lift wood handle
- Extruded out of high quality magnesium
- Tapered thin blade for fitting into tight areas
- Rounded edges

Part#	Size	Desc.	Handle Style
G06425	16" x 3-1/2"	Extruded Magnesium Float	High Lift Wood Handle

**Goldblatt**  
TOOLS



## WOOD HANDLE

### | ROUND END EXTRUDED MAGNESIUM HAND FLOAT

**Goldblatt**  
TOOLS

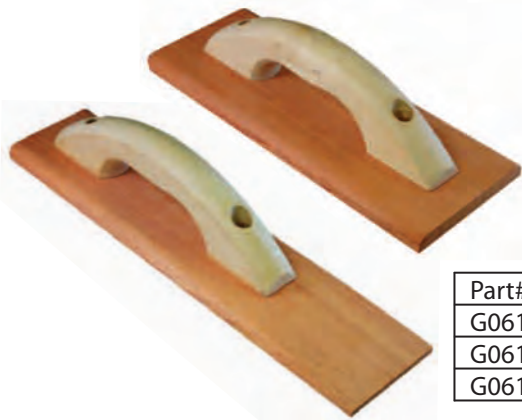


- Ultra-smooth wood handle
- Rounded ends
- Extruded out of high quality magnesium
- Tapered thin blade for fitting into tight areas
- Rounded edges

Part#	Size	Desc.	Handle Style
G06450	16" x 3-1/2"	Extruded Magnesium Float - Round End	Wood Handle

## WOOD HANDLE | MAHOGANY WOOD FLOAT

**Goldblatt**  
TOOLS



- Ultra-smooth wood handle
- High grade seasoned wood
- Lightweight and durable construction
- Ideal for rougher finishes
- Beveled edges

Part#	Size	Desc.	Handle Style
G06151	12" x 4-1/2"	Wide Mahogany Wood Float	Wood Handle
G06156	15" x 3-1/2"	Mahogany Wood Float	Wood Handle
G06157	18" x 3-1/2"	Mahogany Wood Float	Wood Handle

## PLASTIC HANDLE | DIY WOOD HAND FLOAT

**PaceSetter**



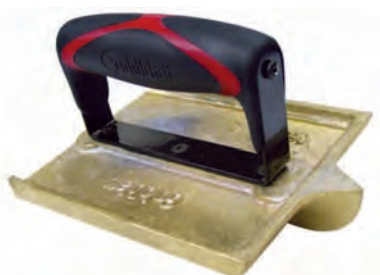
- Comfort plastic handle
- Made from seasoned wood

Part#	Size	Desc.	Handle Style
G09161	12" x 3-1/2"	DIY Wood Float	Plastic Handle
G09162	14" x 3-1/2"	DIY Wood Float	Plastic Handle
G09163	16" x 3-1/2"	DIY Wood Float	Plastic Handle



## PRO-GRIP HANDLE | BRONZE GROOVER

**Goldblatt**  
TOOLS



- Pro-Grip soft handle
- Cast bronze construction for durability and weight
- Belt polished for professional finish and grooves



Part#	Size	Desc.	Handle Style
G06301	6" x 4-1/2" - 3/4" Depth, 5/8" Width	Big Bit Bronze Groover	Pro-Grip Handle
G06309	6" x 4-1/2" - 3/4" Depth, 3/8" Width	Narrow Bit Bronze Groover	Pro-Grip Handle
G06316	6" x 4-1/2" - 1" Depth, 1/2" Width	Deep Bit Bronze Groover	Pro-Grip Handle

## WOOD HANDLE | BRONZE GROOVER

**Goldblatt**  
TOOLS



- Ultra-smooth wood handle
- Cast bronze construction for durability and weight
- Belt polished for professional finish and grooves



Part#	Size	Desc.	Handle Style
G06304	6" x 4-1/2" - 3/4" Depth, 5/8" Width	Big Bit Bronze Groover	Wood Handle
G06314	6" x 4-1/2" - 1" Depth, 1/2" Width	Deep Bit Bronze Groover	Wood Handle

## BRONZE GROOVER FLOAT ATTACHMENT

**Goldblatt**  
TOOLS



- Attaches to Goldblatt floats
- Cast bronze construction for durability and weight
- Belt polished for professional finish and grooves



Part#	Size	Desc.
G16627	1-1/2" Depth, 3/4" Width	Bronze Groover Attachment for Floats



## PRO-GRIP HANDLE | BRONZE EDGER

**Goldblatt**  
TOOLS



- Pro-Grip soft handle
- Cast bronze construction for durability and weight
- Belt polished for professional finish and grooves



Part#	Size	Desc.	Handle Style
G06310	6" x 2-3/4" - 5/8" Lip, 1/4" Radius	Bronze Edger	Pro-Grip Handle

## WOOD HANDLE | BRONZE EDGER

**Goldblatt**  
TOOLS



- Ultra-smooth wood handle
- Cast bronze construction for durability and weight
- Belt polished for professional finish and grooves



Part#	Size	Desc.	Handle Style
G06311	6" x 2-3/4" - 5/8" Lip, 1/4" Radius	Bronze Edger	Wood Handle

## PRO-GRIP HANDLE | STAINLESS STEEL GROOVER

**Goldblatt**  
TOOLS



- Pro-Grip soft handle
- Rust-proof stainless steel body
- Weighted for optimal performance



Part#	Size	Desc.	Handle Style
G06202	6" x 3" - 1/2" Depth, 1/2" Width	Stainless Steel Groover - Jumbo	Pro-Grip Handle
G06234	6" x 3" - 1/2" Depth, 1/2" Width	Stainless Steel Groover - Curved End	Pro-Grip Handle
G06623	6" x 6" - 1" Depth, 1/8" Width	Stainless Steel Groover - Deep/Thin	Pro-Grip Handle
G06200	6" x 3" - 1/2" Depth, 1/2" Width	Stainless Steel Hand Groover - Jumbo	Pro-Grip Handle

## WOOD HANDLE | STAINLESS STEEL GROOVER



- Ultra-smooth wood handle
- Rust-proof stainless steel body
- Weighted for optimal performance



Part#	Size	Desc.	Handle Style
G06208	6" x 3" - 1/2" Depth, 1/2" Width	Stainless Steel Hand Groover - Curved End	Wood Handle
G06215	6" x 6" - 1" Depth, 1/8" Width	Stainless Steel Hand Groover - Deep/Thin	Wood Handle
G06209	6" x 4 3/4" - 3/8" Depth, 1/2" Width	Stainless Steel Hand Groover	Wood Handle

## WOOD HANDLE | WESTERN STYLE GROOVER



- Ultra-smooth wood handle
- Rust-proof stainless steel body
- Weighted for optimal performance



Part#	Size	Desc.	Handle Style
G06201	3" x 2" - 3/16" Depth, 1/4" Radius	Western Style Stainless Steel Groover	Wood Handle

## WOOD HANDLE | DIY CONCRETE GROOVER



- Steel construction
- Wood handle

Part#	Size	Desc.	Handle Style
G06950	6" x 3" - 1/2" Depth, 1/2" Width	DIY Groover	Wood Handle



## EDGER/GROOVER COMBO

**Goldblatt**  
TOOLS



- Pro-Grip soft handle and wood handle
- Rust-proof stainless steel body



Part#	Size	Desc.
G06693	Stainless Steel Edger/Groover Combo	Pro-Grip Handle
G16249	Stainless Steel Edger/Groover Combo	Wood Handle

## PRO-GRIP HANDLE | STAINLESS STEEL EDGER

**Goldblatt**  
TOOLS



- Pro-Grip soft handle
- Heavy gauge stainless steel blade



Part#	Size	Desc.	Handle Style
G06613	6" x 2 1/2" - 3/8" Lip, 1/4" Radius	SS Edger - Curved End	Pro-Grip Handle
G06235	6" x 3" - 3/8" Lip, 1/4" Radius	Stainless Steel Edger	Pro-Grip Handle
G06236	6" x 3" - 3/8" Lip, 3/8" Radius	Stainless Steel Edger	Pro-Grip Handle
G06237	6" x 3" - 1/2" Lip, 3/8" Radius	Stainless Steel Edger	Pro-Grip Handle
G06283	6" x 3 1/2" - 3/8" Lip, 1/2" Radius	Stainless Steel Edger	Pro-Grip Handle
G06238	6" x 4" - 5/8" Lip, 1/2" Radius	Stainless Steel Edger	Pro-Grip Handle
G06284	6" x 4" - 3/8" Lip, 1/4" Radius	Stainless Steel Edger	Pro-Grip Handle
G06239	6" x 6" - 5/8" Lip, 1/2" Radius	Stainless Steel Edger	Pro-Grip Handle
G06292	6" x 6" - 5/8" Lip, 1/2" Radius	Stainless Steel Edger	Pro-Grip Handle
G06391	6" x 6" - 3/4" Lip, 7/8" Radius	Stainless Steel Edger	Pro-Grip Handle



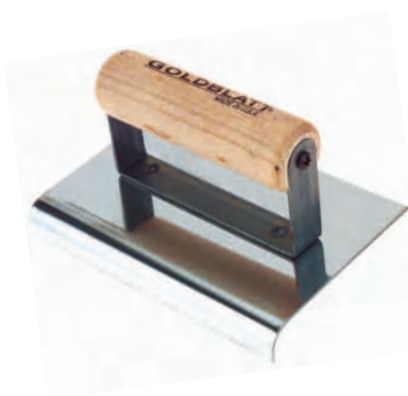
## WOOD HANDLE | DIY CONCRETE EDGER



- Steel construction
- Wood handle

Part#	Size	Desc.	Handle Style
G06940	6" x 3"	DIY Edger	Wood Handle

## WOOD HANDLE | STAINLESS STEEL EDGER



- Ultra-smooth wood handle
- Heavy gauge stainless steel blade



Part#	Size	Desc.	Handle Style
G06260	6" x 2" - 3/8" Lip, 1/2" Radius	Stainless Steel Edger	Wood Handle
G06241	6" x 3" - 3/8" Lip, 1/4" Radius	Stainless Steel Edger	Wood Handle
G06242	6" x 2 1/2" - 3/8" Lip, 1/4" Radius	SS Edger - Curved End	Wood Handle
G06303	6" x 3" - 3/8" Lip, 1/4" Radius	Stainless Steel Edger	Wood Handle
G06341	6" x 3" - 3/8" Lip, 3/8" Radius	Stainless Steel Edger	Wood Handle
G06264	6" x 3" - 1/2" Lip, 3/8" Radius	Stainless Steel Edger	Wood Handle
G06265	6" x 3" - 1/2" Lip, 5/8" Radius	Stainless Steel Edger	Wood Handle
G06272	6" x 4" - 3/8" Lip, 1/4" Radius	Stainless Steel Edger	Wood Handle
G06385	6" x 6" - 3/8" Lip, 3/8" Radius	Stainless Steel Edger	Wood Handle
G06275	6" x 6" - 5/8" Lip, 1/2" Radius	Stainless Steel Edger	Wood Handle
G06259	10" x 4" - 3/8" Lip, 1/2" Radius	Stainless Steel Edger	Wood Handle

## BRONZE | WALKING GROOVER



- Cast bronze construction for durability and weight
- Belt polished for professional finish and grooves
- Curved on both sides to work in either direction
- Fresno handle adaptor included
- Cast bronze fresno mounting



Part#	Size	Desc.
G16275	8" x 4 1/2" - 1" Depth, 1/2" Width	Walking Bronze Groover - Fresno Adaptor
G16280	6" x 4 1/4" - 3/4" Depth, 7/8" Width	Walking Bronze Cali Groover - Fresno Adaptor

## BRONZE | WALKING EDGER



- Cast bronze construction for durability and weight
- Belt polished for professional finish and grooves
- Curved on both sides to work in either direction
- Fresno handle adaptor included
- Cast bronze fresno mounting



Part#	Size	Desc.
G16260	9" x 4" - 3/4" Lip, 1/4" Radius	Walking Bronze Edger - Fresno Adaptor

## STAINLESS STEEL | WALKING GROOVER



- Heavy gauge stainless steel blade
- Curved on both sides to work in either direction
- All angle handle bracket
- Fresno adaptor bracket

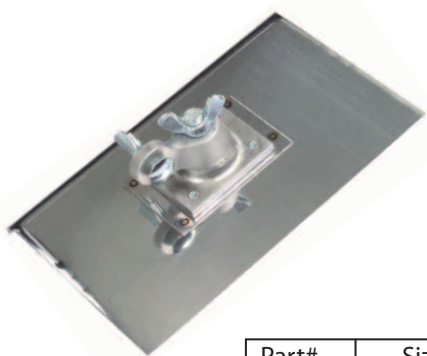


Part#	Size	Desc.
G16247	8" x 6" - 1 Depth, 1/2" Width	Walking Stainless Steel Groover - Fresno Adaptor



## STAINLESS STEEL | WALKING EDGER

**Goldblatt**  
TOOLS



- Heavy gauge stainless steel blade
- Curved on both sides to work in either direction
- All angle handle bracket
- Fresno adaptor bracket



Part#	Size	Desc.
G16271	10" x 3" - 3/4" Lip, 3/8" Radius	Walking Stainless Steel Edger - Fresno Adaptor
G16270	10" x 6" - 1/2" Lip, 3/8" Radius	Walking Stainless Steel Edger -Fresno Adaptor

## PRO-GRIP HANDLE | CORNER TOOL

**Goldblatt**  
TOOLS



- Used to form inside and outside corners
- Ideal for steps or anywhere requiring a square corner
- Pro-Grip soft handle
- Heavy gauge stainless steel blade



Part#	Size	Desc.	Handle Style
G06659	6" x 2 1/2" - 1/2" Radius	Inside Corner Tool	Pro-Grip Handle
G06695	6" x 2 1/2" - 1/2" Radius	Outside Corner Tool	Pro-Grip Handle

## WOOD HANDLE | CORNER TOOL

**Goldblatt**  
TOOLS



- Used to form inside and outside corners
- Ideal for steps or anywhere requiring a square corner
- Ultra-smooth wood handle
- Heavy gauge stainless steel blade



Part#	Size	Desc.	Handle Style
G06224	6" x 2 1/2" - 1/2" Radius	Inside Corner Tool	Wood Handle
G06223	6" x 2 1/2" - 1/2" Radius	Outside Corner Tool	Wood Handle



## PLASTIC BRISTLE | CONCRETE BROOM

**Goldblatt**  
TOOLS



- Plastic bristles for longer life set in hardwood back
- 60" wood handle



Part#	Size	Desc.	Handle Style
G16164	24" x 3 1/4"	Plastic Bristle Concrete Broom	Wood Handle
G16153	36" x 3 1/4"	Plastic Bristle Concrete Broom	Wood Handle
G16177	36" x 3"	Soft Bristle Aluminum Broom	Fresno Handle
G16340	5ft.	Threaded Wood Handle	Wood Handle

## SLIDERS | KNEE BOARDS

**Goldblatt**  
TOOLS



- High grade stainless steel or plastic construction
- Designed to prevent marking and distribute weight evenly



Part#	Desc.
G16150	Plastic Knee Boards
G16152	Stainless Steel Knee Boards

## KNEE PADS

**Goldblatt**  
TOOLS



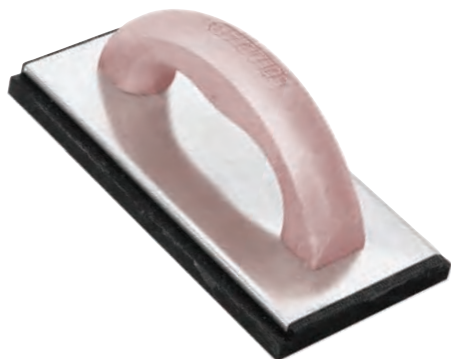
- Distributes weight evenly to provide maximum comfort
- Velcro straps prevent slipping



Part#	Desc.
G06170	Rubber Cushion Knee Pads
G02170	Non-Marking Knee Pads
G06135	Foam Knee Pads

## PLASTIC HANDLE | RUBBER FLOAT

**Goldblatt**  
TOOLS



- Comfort solid plastic handle
- High quality rubber for extended use
- Aluminum mounting plate



Part#	Size	Desc.	Handle Style
G03271	8" x 4"	Sponge Rubber Float - Dense	Plastic Handle
G03281	8" x 4"	Sponge Rubber Float - Coarse	Plastic Handle
G03295	8" x 4"	Sponge Rubber Float - Molded	Plastic Handle

## PRO-GRIP HANDLE | FLUTED RUB BRICK

**Goldblatt**  
TOOLS



- Pro-Grip soft handle
- Fluted silicone carbide stone
- 20 Grit square base
- Ideal for dressing down concrete and removing marks



Part#	Size	Desc.	Handle Style
G06183	6" x 3"	Fluted Rub Brick	Pro-Grip Handle
G06168	8" x 3"	Fluted Rub Brick	Pro-Grip Handle

## BRICK TROWEL

**Goldblatt**  
TOOLS



- Precisely forged from high quality carbon steel
- Tough yet flexible
- Sturdy and lightweight for long lasting use
- Slip resistant Pro-Grip handle



Part#	Size	Desc.	Handle Style
G01618	10" x 4-5/8"	Narrow London Brick Trowel	Pro-Grip Handle
G01620	11" x 4-3/4"	Narrow London Brick Trowel	Pro-Grip Handle
G01622	12" x 4-7/8"	Narrow London Brick Trowel	Pro-Grip Handle
G01651	11" x 5-1/2"	Philadelphia Pattern Brick Trowel	Pro-Grip Handle
G01626	11" x 5-5/8"	Wide Heel London Brick Trowel	Pro-Grip Handle





## ONE PIECE FORGED TROWEL



- One piece forged trowels are the highest quality on the market.
- Precisely forged from high quality carbon steel, these trowels are slowly taper-ground to perfect balance and shape by experienced craftsmen.
- Tough, yet flexible, the Goldblatt trowels are both light-weight and long lasting .
- The Pro-Grip handle is soft and ergonomic to decrease fatigue.

Part#	Size	Desc.	Handle Style
G01690	10"	One piece Forged Brick Trowel	Pro-Grip Handle
G01691	11"	One piece Forged Brick Trowel	Pro-Grip Handle
G01692	5"	One piece Forged Margin Trowel	Pro-Grip Handle
G01693	5" x 1-1/2"	One Piece Forged Margin Trowel	Pro-Grip Handle
G01694	5" x 2-1/2"	One Piece Forged Pointing Trowel	Pro-Grip Handle
G01695	7" x 3"	One Piece Forged Pointing Trowel	Pro-Grip Handle
G01696	1/2"	One Piece Forged Tuck Pointing Trowel	Pro-Grip Handle
G01697	3/8"	One Piece Forged Tuck Pointing Trowel	Pro-Grip Handle
G01698	1/4"	One Piece Forged Tuck Pointing Trowel	Pro-Grip Handle
G01699	3/16"	One Piece Forged Tuck Pointing Trowel	Pro-Grip Handle

## WOOD HANDLE

### | DIY GENERAL MASONRY BRICK TROWEL



- Carbon steel blade is ground and polished
- Steel ferrule hardwood handle
- Nicely balanced

Part#	Size	Desc.	Handle Style
G01910	10"	Philadelphia Pattern Brick Trowel	Wood Handle
G01911	10"	Narrow London Brick Trowel	Wood Handle



## WOOD HANDLE

### | OLD PRO BUTTERING TROWEL



- The finest forged buttering trowel made today
- Carefully and precisely taper ground for flexibility and balance
- Hardwood handle with steel ferrule

Part#	Size	Desc.	Handle Style
G09341	7" x 4-3/8"	Buttering Trowel	Wood Handle



## WOOD HANDLE | BUCKET TROWEL



- Stiff carbon steel blade
- Diagonally cut blade for easy use in a bucket or mortar box

Part#	Size	Desc.	Handle Style
G01126	7-1/2"	Bucket Trowel	Wood Handle



## PRO-GRIP & HARDWOOD HANDLE

### | MARGIN TROWEL



- Precisely forged from high quality carbon steel
- Tough yet flexible
- Available in hardwood and Pro-Grip handle

Part#	Size	Desc.	Handle Style
G09334	5" x 1-1/2"	Margin Trowel	Pro-Grip Handle
G09335	5" x 2"	Margin Trowel	Pro-Grip Handle
G09336	6" x 2"	Margin Trowel	Pro-Grip Handle
G09337	8" x 2"	Margin Trowel	Pro-Grip Handle
G09331	5" x 1-1/2"	Margin Trowel	Wood Handle
G09332	5" x 2"	Margin Trowel	Wood Handle



## WOOD HANDLE | DIY MARGIN TROWEL



- Carbon steel blade is ground and polished
- Steel ferruled hardwood handle
- Nicely balanced

Part#	Size	Desc.	Handle Style
G01920	5" x 2"	DIY Margin Trowel	Wood Handle

## PRO-GRIP & HARDWOOD HANDLE



### | POINTING TROWEL



- Precisely forged from high quality carbon steel
- Tough yet flexible
- Available in hardwood and Pro-Grip handle



Part#	Size	Desc.	Handle Style
G09340	5"	Pointing Trowel	Pro-Grip Handle
G09346	5-1/2"	Pointing Trowel	Pro-Grip Handle
G09348	7"	Pointing Trowel	Pro-Grip Handle
G09322	5-1/2"	Pointing Trowel	Wood Handle
G09323	7"	Pointing Trowel	Wood Handle

## WOOD HANDLE | DIY POINTING TROWEL



- Carbon steel blade is ground and polished
- Steel ferruled hardwood handle
- Nicely balanced

Part#	Size	Desc.	Handle Style
G01930	5"	Pointing Trowel	Wood Handle
G01932	7"	Pointing Trowel	Wood Handle

## PRO-GRIP HANDLE | CROSS JOINT TROWEL



- Carefully forged from high carbon steel
- Precisely tempered and ground for flexibility and balance
- Pro-Grip handle

Part#	Size	Desc.	Handle Style
G09354	4-3/4" x 1-3/4"	Cross Joint Trowel	Pro-Grip Handle

## PRO-GRIP HANDLE | GAUGING TROWEL



- Carefully forged from high carbon steel
- Precisely tempered and ground for flexibility and balance
- Pro-Grip handle

Part#	Size	Desc.	Handle Style
G09349	7" x 3-1/8"	Gauging Trowel	Pro-Grip Handle
G09356	7" x 3"	Gauging Trowel	Wood Handle

## PRO-GRIP HANDLE | DUCK BILL TROWEL



- Carefully forged from high carbon steel
- Precisely tempered and ground for flexibility and balance
- Pro-Grip handle

Part#	Size	Desc.	Handle Style
G09350	10" x 2"	Duck Bill Trowel	Pro-Grip Handle



## PRO-GRIP HANDLE | TUCKPOINTING TROWEL

**Goldblatt**  
TOOLS



- High lift handles for plenty of knuckle clearance
- Blade is forged from high carbon steel
- Blade is ground for perfect flex

Part#	Size	Desc.	Handle Style
G01678	3/16" x 6-3/4"	Tuckpointing Trowel	Pro-Grip Handle
G01679	1/4" x 6-3/4"	Tuckpointing Trowel	Pro-Grip Handle
G01681	3/8" x 6-3/4"	Tuckpointing Trowel	Pro-Grip Handle
G01683	1/2" x 6-3/4"	Tuckpointing Trowel	Pro-Grip Handle
G01685	5/8" x 6-3/4"	Tuckpointing Trowel	Pro-Grip Handle

## WOOD HANDLE | DIY TUCKPOINTING TROWEL



- Carbon steel blade is ground and polished
- Steel ferruled hardwood handle
- Nicely balanced

Part#	Size	Desc.	Handle Style
G01961	3/16" x 6-3/4"	DIY Tuckpointing Trowel	Wood Handle
G01962	1/4" x 6-3/4"	DIY Tuckpointing Trowel	Wood Handle
G01963	3/8" x 6-3/4"	DIY Tuckpointing Trowel	Wood Handle
G01964	1/2" x 6-3/4"	DIY Tuckpointing Trowel	Wood Handle

## CONVEX BRICK JOINTER

**Goldblatt**  
TOOLS



- Use on half round or sunken joints
- Heavy gauge steel is long wearing
- Easy to handle
- Each end makes a different size joint

Part#	Size	Desc.
G01160	3/8" x 1/2"	Convex Brick Jointer
G01161	1/2" x 5/8"	Convex Brick Jointer
G01162	5/8" x 3/4"	Convex Brick Jointer
G01165	3/4" x 7/8"	Convex Brick Jointer
G01164	7/8" x 1"	Convex Brick Jointer



## DIY BRICK JOINTER



- Heavy duty plated steel
- One end for brick, one end for block

Part#	Size	Desc.
G01940	5/8" x 1/2"	DIY Convex Brick Jointer

## WOOD HANDLE | GRAPEVINE JOINTER



- Used for colonial joints
- 6" long blade 1/2" wide joint
- Smooth hardwood handle.



Part#	Desc.	Handle Style
G01201	Grapevine Jointer Wood Handle	Wood Handle

## SKATE WHEEL JOINT RAKER



- Specially hardened large diameter skate wheels
- Easy grip handle will also rod joints
- Hardened nail is adjustable for depth



Part#	Desc.
G01210	Skate Wheel Joint Raker



## WOOD LINE BLOCKS



- Select hardwood machined to exact specifications
- Use on both brick and block
- Shrink wrapped one pair per package

Part#	Desc.
G01243	Wood Line Blocks

**Goldblatt**  
TOOLS



## ADJUSTABLE ALUMINUM | LINE STRETCHERS



- Works on blocks from 4" to 12"
- Loosen wing nut and move bolt to change size
- Packaged in pairs
- Made of quality cast aluminum

Part#	Desc.
G01248	Adjustable Aluminum Line Stretchers

**Goldblatt**  
TOOLS



## BRAIDED MASONRY LINE



- Abrasion and alkali resistant
- 4 highly visible colors
- Built in elasticity eliminates sagging

Part#	Size	Desc.
G11238	250 ft	Braided Nylon Line - Yellow
G11255	250 ft	Braided Nylon Line - Pink
G11240	500 ft	Braided Nylon Line - White
G11241	500 ft	Braided Nylon Line - Green
G11242	500 ft	Braided Nylon Line - Yellow

**Goldblatt**  
TOOLS





## TWISTED MASONRY LINE



- Abrasion and alkali resistant
- 2 highly visible colors

Part#	Size	Desc.
G11247	350 ft	Twisted Nylon Line - White
G11249	350 ft	Twisted Nylon Line - Yellow

## ACID BRUSH



- Bristles in foam lightweight plastic block
- Warp, rot, and crack resistant for life of bristles
- Hang up hole for easy display

Part#	Size	Desc.
G01262	8"	Acid Brush



## LONG ARM UTILITY BRUSH



- Easy to grasp handle
- Hang up hole for easy display
- Warp, rot, and crack resistant for life of bristles

Part#	Size	Desc.
G01421	20" x 5" x 6"	Long Arm Utility Brush





## UTILITY BRUSH

**Goldblatt**  
TOOLS



- Versatile multi purpose brush
- Hang up hole for easy display
- Sturdy yet lightweight design



Part#	Size	Desc.
G01426	6-1/2" x 2" x 4"	Utility Brush

## BRICK CHISEL

**Goldblatt**  
TOOLS



- Ideal for cutting soft stone
- Chisels available in three popular sizes
- Designed for cutting, scoring and trimming
- Works great on both bricks and blocks



Part#	Size	Desc.
G01323	1-3/4" x 7-1/2"	Brick Chisel
G01324	2-4/2" x 7-1/2"	Brick Chisel
G01134	4" x 7"	Brick Chisel

## GROUT BAG

**Goldblatt**  
TOOLS



- Nylon backed with PVC is extra tough yet pliable
- Removable metal tip makes using and cleaning bag easy
- 12" across the top and 24" in length



Part#	Desc.
G07113	Grout Bag

## WOOD HANDLE | MASONRY HAMMER

**Goldblatt**  
TOOLS



- Made of high grade forged hammer steel
- Use to set and cut bricks, masonry, tile, and concrete blocks
- Comfortable hardwood handle is carefully fitted



Part#	Size	Desc.	Handle Style
G01153	16 oz.	Masonry Hammer	Wood Handle

## BRICK TONGS

**Goldblatt**  
TOOLS



- Adjust to carry 6 – 11 bricks
- Heavy duty and built for long service
- Made of light rugged metal alloy, will not damage bricks



Part#	Desc.
G11280	Brick Tongs

## CONCRETE KNEE BOARD WITH HANDLES

**Goldblatt**  
TOOLS



- Durable, lightweight polypropylene
- Soft EVA knee pads
- 13-5/8"L x 18-7/8"W pad
- Comfortable grip handles



Part#	Desc.
G16151	Concrete Knee Board with handles



## 8PC MASON'S TOOL KIT



### Includes:

- 10" narrow london brick trowel
- 10" Wide heel brick trowel
- 5" Pointing trowel
- 5"x2 Margin trowel
- Skate wheel joint raker
- Dual ended convex jointer
- Acid brush
- Pair of line blocks
- Nylon tool bag

Part#	Desc.
G09150	8Pc Mason's Tool Kit

## STAINLESS STEEL PRO-GRIP HANDLE | TAPING KNIFE



- The stainless steel blade has the flex and feel the pro is looking for
- Molded handle will not loosen or wobble
- 1 in. Aluminum spine maintains blade straightness



Part#	Size	Desc.	Handle Style
G05636	6"	Stainless Steel Taping Knife	Pro-Grip Handle
G05638	8"	Stainless Steel Taping Knife	Pro-Grip Handle
G05640	10"	Stainless Steel Taping Knife	Pro-Grip Handle
G05642	12"	Stainless Steel Taping Knife	Pro-Grip Handle
G05644	14"	Stainless Steel Taping Knife	Pro-Grip Handle

## BLUE STEEL PRO-GRIP HANDLE | TAPING KNIFE

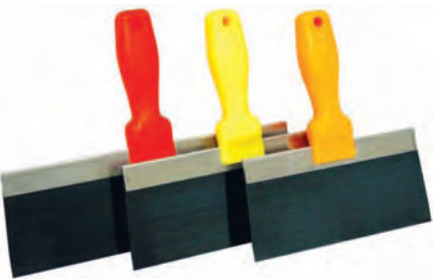


- The blue steel blade has the flex and feel the pro is looking for
- Molded handle will not loosen or wobble
- 1 in. Aluminum spine maintains blade straightness



Part#	Size	Desc.	Handle Style
G05616	6"	Blue Steel Taping Knife	Pro-Grip Handle
G05618	8"	Blue Steel Taping Knife	Pro-Grip Handle
G05620	10"	Blue Steel Taping Knife	Pro-Grip Handle
G05622	12"	Blue Steel Taping Knife	Pro-Grip Handle
G05624	14"	Blue Steel Taping Knife	Pro-Grip Handle

## BLUE STEEL NEON HANDLE | TAPING KNIFE



- High visibility handles are color coded to size of blade and make them easy to locate on the jobsite
- The blue steel blade has the flex and feel the pro is looking for
- Molded handle will not loosen or wobble



Part#	Size	Desc.	Handle Style
G05846	6"	Blue Steel Taping Knife	Neon Green Handle
G05848	8"	Blue Steel Taping Knife	Neon Orange Handle
G05850	10"	Blue Steel Taping Knife	Neon Yellow Handle
G05852	12"	Blue Steel Taping Knife	Neon Red Handle



## STAINLESS STEEL PLASTIC HANDLE | TAPING KNIFE



- High-Impact solid core plastic handles are permanently mounted to blade
- Ultra-flex Stainless Steel blade has the flexibility and performance of blue steel with all the benefits of stainless steel
- Blade will not rust or discolor and is easy to clean-up even with dried on mud

Part#	Size	Desc.	Handle Style
G05748	8"	Stainless Steel Taping Knife	Plastic Handle
G05750	10"	Stainless Steel Taping Knife	Plastic Handle
G05752	12"	Stainless Steel Taping Knife	Plastic Handle
G05754	14"	Stainless Steel Taping Knife	Plastic Handle



## BLUE STEEL PLASTIC HANDLE | TAPING KNIFE



- High-Impact solid core plastic handles molded to a blue steel blade
- Ergonomic designed handles reduce fatigue and improve grip
- Molded handle will not loosen or wobble

Part#	Size	Desc.	Handle Style
G05646	6"	Blue Steel Taping Knife	Plastic Handle
G05648	8"	Blue Steel Taping Knife	Plastic Handle
G05650	10"	Blue Steel Taping Knife	Plastic Handle
G05652	12"	Blue Steel Taping Knife	Plastic Handle
G05654	14"	Blue Steel Taping Knife	Plastic Handle



## STAINLESS STEEL WOOD HANDLE | TAPING KNIFE



- Contoured wood handle is mounted to a 2 in. strong-back rust proof aluminum spine
- Ultra-flex Stainless Steel blade has the flexibility and performance of blue steel with all the benefits of stainless steel
- Blade will not rust or discolor
- Easy clean-up even with dried on mud

Part#	Size	Desc.	Handle Style
G05348	8"	Stainless Steel Taping Knife	Wood Handle
G05350	10"	Stainless Steel Taping Knife	Wood Handle
G05352	12"	Stainless Steel Taping Knife	Wood Handle
G05354	14"	Stainless Steel Taping Knife	Wood Handle



## BLUE STEEL WOOD HANDLE | TAPING KNIFE

**Goldblatt**  
TOOLS



- Contoured wood handle is mounted to a 2 in. strong-back rust proof aluminum spine
- The blade is made from blue spring steel for ideal flex
- Strong back spine maintains blade straightness



Part#	Size	Desc.	Handle Style
G05248	8"	Blue Steel Taping Knife	Wood Handle
G05250	10"	Blue Steel Taping Knife	Wood Handle
G05252	12"	Blue Steel Taping Knife	Wood Handle
G05254	14"	Blue Steel Taping Knife	Wood Handle

## LONG HANDLE | BROAD KNIFE

**Goldblatt**  
TOOLS



- 7 in. wide blue spring steel blade with rounded corners
- The blade is reinforced where it attaches to handle
- 12 in. long light weight aluminum handle increases your reach



Part#	Size	Desc.	Handle Style
G05281	7" Blade 17" Handle	Broad Knife	Long Handle

## PRO-GRIP HAMMER END HANDLE

**Goldblatt**  
TOOLS



### | DRYWALL JOINT KNIFE

- The blade is precision ground to exacting tolerances for ideal flex
- Hammer end-cap has a waffle pattern to ensure proper mud adhesion
- Through molded handle will not loosen or wobble



Part#	Size	Desc.	Handle Style
G05264	1-1/2"	Carbon Steel Joint Knife	Pro-Grip Hammer End Handle
G05266	2"	Carbon Steel Joint Knife	Pro-Grip Hammer End Handle
G05268	3"	Carbon Steel Joint Knife	Pro-Grip Hammer End Handle
G05270	4"	Carbon Steel Joint Knife	Pro-Grip Hammer End Handle
G05271	5"	Carbon Steel Joint Knife	Pro-Grip Hammer End Handle
G05272	6"	Carbon Steel Joint Knife	Pro-Grip Hammer End Handle



## PLASTIC HAMMER END HANDLE

### DRYWALL JOINT KNIFE



- High-impact, shatter proof black plastic handle with hammer-end cap
- The blade is precision ground to exacting tolerances for ideal flex
- Ultra-flex Stainless steel blade will not rust and cleans up easily



Part#	Size	Desc.	Handle Style
G24221	1-1/2"	Stainless Steel Joint Knife	Plastic Hammer End Handle
G24222	2"	Stainless Steel Joint Knife	Plastic Hammer End Handle
G24223	3"	Stainless Steel Joint Knife	Plastic Hammer End Handle
G24224	4"	Stainless Steel Joint Knife	Plastic Hammer End Handle
G24226	6"	Stainless Steel Joint Knife	Plastic Hammer End Handle

## PLASTIC HAMMER END HANDLE

### DRYWALL JOINT KNIFE



- High-impact, shatter proof black plastic handle with hammer-end cap
- The blade is precision ground to exacting tolerances for ideal flex
- High carbon steel blade is polished to a mirror like finish for easy clean-up



Part#	Size	Desc.	Handle Style
G24121	1-1/2"	Carbon Steel Joint Knife	Plastic Hammer End Handle
G24122	2"	Carbon Steel Joint Knife	Plastic Hammer End Handle
G24123	3"	Carbon Steel Joint Knife	Plastic Hammer End Handle
G24124	4"	Carbon Steel Joint Knife	Plastic Hammer End Handle
G24126	6"	Carbon Steel Joint Knife	Plastic Hammer End Handle

## LIGHTWEIGHT PLASTIC HANDLE

### DRYWALL JOINT KNIFE



- Light weight plastic handle
- Carbon steel blade
- Great all purpose putty knife

Part#	Size	Desc.	Handle Style
G24302	1-1/2"	Joint Knife	Lightweight Plastic Handle
G24308	3"	Joint Knife	Lightweight Plastic Handle
G24306	4"	Joint Knife	Lightweight Plastic Handle
G24310	6"	Joint Knife	Lightweight Plastic Handle
G24311	6"	Joint Knife	Lightweight Plastic Handle

## PLASTIC HANDLE | STIFF SCRAPER



- Heavy-Duty high impact plastic handle
- Rigid high-carbon steel blade with beveled edge
- Threaded handle attaches to all standard brooms

Part#	Size	Desc.	Handle Style
G24102	1-1/2"	Stiff Carbon Steel Scraper	Hammer End Plastic Handle
G23105	2"	Stiff Carbon Steel Scraper	Hammer End Plastic Handle
G24107	3"	Stiff Carbon Steel Scraper	Hammer End Plastic Handle

## ALL PLASTIC | JOINT KNIFE



- Flexible injection molded plastic knives
- Easy to shape for odd shapes
- Great for odd jobs

Part#	Size	Desc.	Handle Style
G09104	1-1/2"	All Plastic Joint Knife	Plastic Handle
G09105	2"	All Plastic Joint Knife	Plastic Handle
G09106	3"	All Plastic Joint Knife	Plastic Handle
G09107	4"	All Plastic Joint Knife	Plastic Handle
G09110	6"	All Plastic Joint Knife	Plastic Handle
G09111	8"	All Plastic Joint Knife	Plastic Handle
G09112	10"	All Plastic Joint Knife	Plastic Handle
G05805	2", 4", 6"	3 Pack Joint Knife	Plastic Handle

## PRO-GRIP HAMMER END HANDLE



## SPECIALTY JOINT KNIFE



- Pro-Grip handle has the ideal fit and balance designed to reduce fatigue and improve performance
- For odd or intricate shapes
- Blades are ground to the same precision tolerances as our other knives



Part#	Desc.	Handle Style
G05262	Pie-shaped Joint Knife	Pro-Grip Handle
G05263	Clipped Joint Knife	Pro-Grip Handle



## HAMMER END HANDLE | PAINTER TOOLS



- Sturdy high-carbon steel blade
- Versatile multi-use tool with a scraper end
- Hammer-end handle

Part#	Desc.	Handle Style
G05275	9-in-1 Tool	Pro-Grip Hammer End Handle

## HAMMER END HANDLE | PAINTER TOOLS



- Sturdy high-carbon steel blade
- Versatile multi-use tool with a scraper end
- Hammer-end handle

Part#	Desc.	Handle Style
G24115	5-in-1 Tool	Plastic Hammer End Handle

## PRO-GRIP HANDLE | INSIDE CORNER TOOL



- Blade is formed from a single piece of ultra-flex stainless steel
- Finishes both sides of a corner at the same time
- Blade will not lose it's shape with extended use
- Pro-grip handle improves grip and reduces fatigue

Part#	Desc.	Handle Style
G05520	Inside Corner Tool	Wood Handle
G05521	Inside Corner Tool - Small	Pro-Grip Handle
G05522	Inside Corner Tool	Pro-Grip Handle
G05526	Inside Corner Tool - Bull Nose	Pro-Grip Handle

## PRO-GRIP HANDLE | OUTSIDE CORNER TOOL

**Goldblatt**  
TOOLS



- Blade is formed from a single piece of ultra-flex stainless steel
- Smoothly finishes both sides of the radius at the same time
- Blade will not lose it's shape with extended use
- Pro-Grip handle improves grip and reduces fatigue



Part#	Desc.	Handle Style
G05528	Outside Corner Tool - Bull Nose	Pro-Grip Handle
G05529	Outside Corner Tool	Pro-Grip Handle

## WOOD HANDLE | INSIDE CORNER TOOL



- Stainless steel blade
- Smooth wood handle
- Great for touch-up jobs

Part#	Desc.	Handle Style
G05910	Inside Corner Tool	Wood Handle

## RUBBER CORNER TOOLS

**Goldblatt**  
TOOLS



- Adjustable to all sizes and shapes of bull nose and odd angles
- Easy to clean rubber body
- Bends to fit any shape or angle



Part#	Desc.
G05560	Round-It-Tool-Rubber, Adjustable
G14338	Wipe-Down Knife-rubber



## ALUMINUM HAWK



- Lightweight aluminum face plate
- Pro-Grip handle and foam O-ring make it comfortable to use all day
- Rounded corners on the face plate for safer use



Part#	Size	Desc.	Handle Style
G03161	13" x 13"	Aluminum Hawk	Pro-Grip Handle
G03175	13" x 13"	Aluminum Hawk	Wood Handle
G05155	10" x 10"	Aluminum Hawk	Pro-Grip Handle

## PRO-GRIP HANDLE | DRYWALL FINISHING TROWEL



- Curved blade to build the ideal crown
- Cross ground blade for the pre broken-in feel
- Comfortable Pro-grip handle reduces fatigue and improves grip



Part#	Size	Desc.	Handle Style
G05610	12" x 4"	Curved Blade Drywall Trowel	Pro-Grip Handle
G05511	11" x 4"	Curved Blade Drywall Trowel	Pro-Grip Handle
G03454	11" x 4-1/2"	Stainless Steel Drywall Trowel	Wood Handle

## STAINLESS STEEL HELI-ARC WELD | MUD PAN



- Rust resistant stainless steel with welded seams that will not leak
- Easy clean up even with dried on mud
- Sturdy straight edges taper down to a small base



Part#	Size	Desc.
G05224	12"	Stainless Steel Mud Pan Heli-Arc Weld
G05225	14"	Stainless Steel Mud Pan Heli-Arc Weld

## NON-SLIP | MUD PAN



- Rust resistant stainless steel with welded seams that will not leak
- Easy clean up even with dried on mud
- Contoured bottom edges with no slip character lead to more comfortable grip

Part#	Size	Desc.
G05226	12"	Stainless Steel No Slip Mud Pan Heli-Arc Weld

## RED PLASTIC | MUD PAN



- Injection molded high impact plastic body
- Dual steel blade edge for clean knife wipes

Part#	Size	Desc.
G05206	12"	Red Plastic Mud Pan

## GALVANIZED | MUD PAN



- Rust proof galvanized metal panels
- Non-leaking wrap around seams
- Sturdy straight edges for clean knife wipes.

Part#	Size	Desc.
G05102	12"	Galvanized Mud Pan





## BLUE PLASTIC | MUD PAN



- Injection molded high impact plastic body
- Single sided steel blade edge for clean knife wipes

Part#	Size	Desc.
G05202	10"	Blue Plastic Mud Pan

## DRY TAPE BANJO



- The original Banjo®
- Lightweight deep draw aluminum body
- Stronger lid clips for a secure, no-leak seal
- Adjustable thumb screw to meter the mud flow
- Tape stays dry and is visible through the back

Part#	Desc.
G15301	Banjo®-Dry Tape

## WET TAPE BANJO



- The original Banjo®
- Lightweight deep draw aluminum body
- Stronger lid clips for a secure, no-leak seal
- Adjustable thumb screw to meter the mud flow
- Tape and mud occupy the same all in one cavity

Part#	Desc.
G15302	Banjo®-Wet Tape

## E-Z LOAD | DENVER STYLE BANJO



- Exposed tape holder area
- Single latch lid operation
- Comfort grip strap for one hand operation

Part#	Desc.
G15330	Banjo®-Dry E-Z Load, Denver Style

## MUD BUD BANJO



- Light weight polycarbonate body will not break
- Quick release clips and removable lid make for easy cleanup
- Clear plastic allows you to see when you're about out of mud

Part#	Desc.
G15333	Mud Bud Banjo

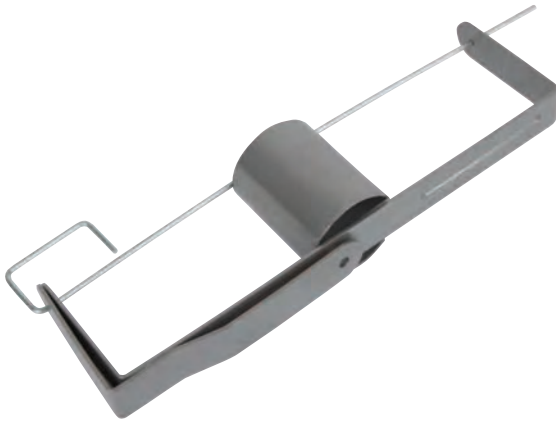
## 7 PIECE | DRYWALL REPAIR KIT



- Kit includes:
- |                        |                            |
|------------------------|----------------------------|
| 10" Plastic mud pan    | 3" Plastic putty knife     |
| 10" Taping knife       | 1-1/2" Plastic putty knife |
| 6" Plastic putty knife | Plastic corner tool        |
|                        | Dual grit sanding sponge   |

Part#	Desc.
G05975	7 Piece Drywall Repair Kit

## DRYWALL TAPE HOLDER



- Holds up to a 500ft. roll of paper or mesh tape
- Quick and easy tape roll changes
- Handy belt clip for ease of use

Part#	Desc.
G05221	Drywall Tape Holder

## 100' | FLEX CORNER TAPE



- Save time and money with this specialized drywall tape
- Perfect edges on every angle every time
- Applies using standard joint compound with metal strips toward the wall
- Paper is machine sanded for a rough surface for better adhesion

Part#	Size	Desc.
G15700	100ft Roll	Flex Corner Tape - 100'

## 300' X 2" | FIBERGLASS MESH TAPE



- Self-adhesive backing - no mud bed required
- Leno weave design for more strength
- High tack adhesive for long adhesion

Part#	Size	Desc.
G15240	300' x 2' Roll	300' x 2" White Mesh Tape



## DRYWALL REPAIR PATCH



- Self adhesive no joint compound required
- Leno weave makes for a stronger weave
- Colored tape is used for sanding depth indicator

Part#	Size	Desc.
G15215	4" x 4"	Drywall Repair Patch - 2 Pack
G15218	4" x 4"	Drywall Repair Patch - 50 Pack
G15219	6" x 6"	Drywall Repair Patch - 50 Pack
G15225	8" x 8"	Drywall Repair Patch - 2 Pack
G15220	Assorted	(2) 2" x 2" (1) 4" x 4" (1) 6" x 6"

## CAST ALUMINUM | SWIFT MUD MIXER



- Cast aluminum head is strong and lightweight
- Blade angles lift, fold and whip compound to an even texture
- 1/2 in. drive drill required to fit 7/16 in. shaft
- Ideal for mixing joint compound, acoustic texture and other types of similar material



Part#	Size	Desc.
G15303	30" x 3/8" Shaft	Swift Mud Mixer with Cast Aluminum Head

## WESTERN STYLE MUD MIXER

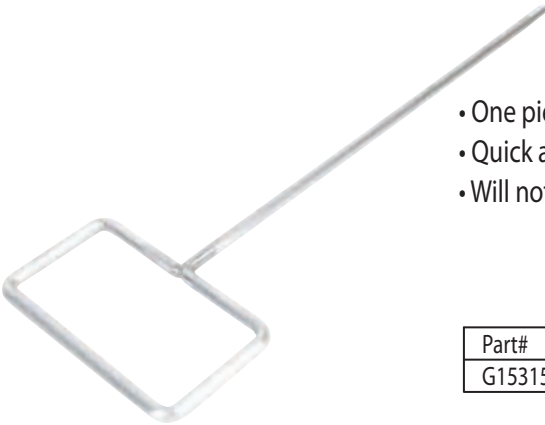


- Cold rolled steel mixer with a 3/8 shaft
- Blade angles lift and fold compound to a consistent even texture
- Ideal for mixing joint compound, acoustic texture, paints and other types of similar material



Part#	Size	Desc.
G15314	30" x 3/8" Shaft	Western Style Mud Mixer

## SINGLE ROD | MUD MIXER



- One piece lightweight aluminum round bar
- Quick and easy to clean
- Will not shear bucket or contaminate material



Part#	Size	Desc.
G15315	30" X 3/8" Shaft	Single Rod Mud Mixer

## TWO WHEEL | MUD MIXER



- Quickly mixes and disperses lumps with its counter flow design
- 5 fin wheels are adjustable up and down the shaft to the depth of your material
- High-stress plated carbon steel blades are rugged and durable
- Ideal for mixing joint compound, acoustic texture, paints and other types of similar material



Part#	Size	Desc.
G15343	3" Wheel / 16" Shaft	Two Wheel Mud Mixer
G15310	5" Wheel / 24" Shaft	Two Wheel Mud Mixer

## PAINT/MUD MIXER



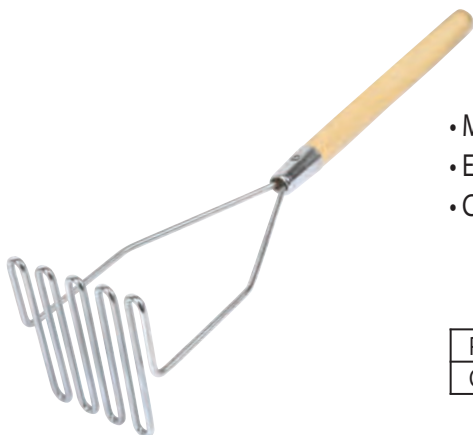
- This tornado shaped speed mixer creates a powerful auger action
- Protective ring around the bottom ensures no bucket damage
- High-stress plated carbon steel blades are rugged, durable and resist rust
- Ideal for mixing joint compound, acoustic texture, paints and other types of similar material



Part#	Size	Desc.
G15405	2"	Paint/Mud Mixer
G15420	4"	Paint/Mud Mixer

## MUD MASHER

**Goldblatt**  
TOOLS



- Made of heavy duty, rust resistant plated wire
- Excellent for mixing small batches
- Comfortable 24" wood handle with steel ferrule.



Part#	Size	Desc.
G05103	5" Head / 24" Handle	Mud Masher

## RUBBER | FLOATS

**Goldblatt**  
TOOLS



- Light weight plastic handle
- Sturdy aluminum back plate



Part#	Size	Desc.
G03281	8" x 4"	Sponge Rubber Float (coarse)
G03271	8" x 4"	Sponge Rubber Float (dense)
G03295	8" x 4"	Molded Rubber Float

## FOAM FLOATS

**Goldblatt**  
TOOLS



- Light weight plastic handle
- Sturdy aluminum back plate



Part#	Size	Desc.
G03503	12" x 5"	Green Foam Float
G03502	9-1/2" x 4"	Green Foam Float



## BLACK PLASTIC | FLOATS



- Constructed of high-impact light weight plastic
- Smooth flat base
- Great for EIFS and stucco textures



Part#	Size	Desc.
G09132	11" X 5-1/2"	Black Plastic Float

## TOOL BAG

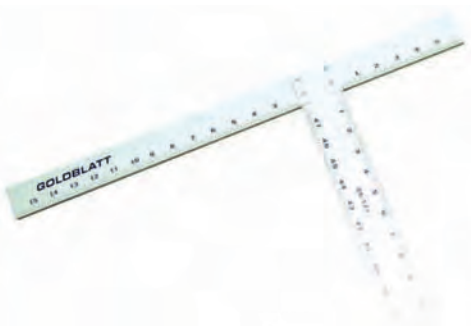


- Heavy duty reinforced nylon tool bag is weather resistant
- Lined with pockets along the outside and inside
- Large mouth opening
- Reinforced base with no-mar feet



Part#	Desc.
G17300	Tool Bag

## DRYWALL T-SQUARE



- Standard scale with large marking for easy readability
- 2 in. wide blade allows you to cut both sides of an outlet opening without moving it
- 22 in. head ensures accurate 90 cuts
- Ridged 3/16 in. thick blade



Part#	Size	Desc.
G05121	48"	Drywall T-Square (standard)
G05123	48"	Drywall T-Square (metric)

## 48" HD ADJUSTABLE DRYWALL T-SQUARE



- Aluminum body with powder coating
- Fully adjustable head
- Heavy duty 1/4" thick blade

Part#	Desc.
G05408	48" HD Adjustable Drywall T-Square

**Goldblatt**  
TOOLS



## BLADE RUNNER



- Cuts both sides of the drywall simultaneously
- Cuts 1/2in. and 5/8in. drywall
- Cuts curves, corners, shapes, and straight with ease

Part#	Desc.
G15850	Blade Runner
G15855	Replacement Blades 6-Pack
G15856	Replacement Blades 12-Pack
G15857	Blade Runner Holster

**Goldblatt**  
TOOLS



## DRYWALL ROLL LIFTER



- Heavy duty 13 gauge steel body and roller
- Lifts and positions panels for mounting
- Single foot operation

Part#	Desc.
G15149	Heavy Duty Roll Lifter

**Goldblatt**  
TOOLS



## DRYWALL PANEL CARRIER



- Constructed of high-impact plastic and rubber padding
- Offset comfort grip handle allows hand clearance
- Rubber pads along the base help prevent the panel from sliding

Part#	Desc.
G06703	Drywall Panel Carrier



## DRYWALL RASP



- High-impact plastic body with a rubber cushion grip
- Dual direction blade cuts both ways
- Fold down rail guides to prevent slipping
- Easy clean-out open end design

Part#	Desc.
G05181	Drywall Rasp



## DRYWALL SCREW ADAPTER



- Convert any drill to a screw gun
- Counter sinks screws to the proper depth
- Will not tear, puncture or damage drywall
- Magnetic head helps hold screw in place

Part#	Desc.
G15840	Drywall Screw Adaptor





## CORNER BEAD CLINCHER

**Goldblatt**  
TOOLS



- One mallet blow drives the cornerbead flush and tight to the corner while crimping the edge of the bead to hold in place
- Cast metal body will deliver consistent results and superior performance
- Stainless Steel head and precision ground teeth provide superior performance



Part#	Desc.
G15813	Corner Bead Clincher with Mallet

## CHECKERHEAD | DRYWALL HAMMER

**Goldblatt**  
TOOLS



- Properly rounded and checkered head
- Dimples drywall perfectly
- 12 oz head mounted to solid hickory handle
- Eliminates sore knuckles



Part#	Size	Desc.
G05154	14"	Drywall Hammer-Checkerhead
G05164	16"	Drywall Hammer-Checkerhead

## DRYWALL CIRCLE CUTTER

**Goldblatt**  
TOOLS



- Constructed from case hardened steel
- Precision calibrated
- Cuts up to a 16 in. diameter hole
- Stay sharp carbide cutting wheel cuts quick clean holes



Part#	Desc.
G05141	Circle Cutter

## AGGRESSIVE TOOTH | DRYWALL PANEL SAW

**Goldblatt**  
TOOLS



- Aggressive triple ground tooth design cuts 50% faster than traditional saws
- Temper hardened teeth stay sharp and cut in both directions
- For use on drywall, wood, plastic and even cement board
- Non-slip Pro-Grip handle



Part#	Size	Desc.
G15801	15"	Aggressive Tooth Drywall Panel Saw

## PRO-GRIP HANDLE | DRYWALL JAB SAW

**Goldblatt**  
TOOLS



- Sharptooth design cuts 50% faster than traditional tooth design
- Temper hardened blade cuts in both directions
- For use on drywall, wood, plastic and even cement board
- Non-slip Pro-Grip handle.



Part#	Size	Desc.	Handle Style
G20556	6"	Drywall Jab Saw	Pro-Grip Handle

## 6" DOUBLE EDGE WALLBOARD SAW

**Goldblatt**  
TOOLS



- Hardened and tempered steel blade with sharpened teeth
- Easily cuts through wallboard and synthetic building material
- Heavy duty rubber grip handle



Part#	Desc.
G05409	6" Double Edge Wallboard Saw

## CUSHION GRIP HANDLE | UTILITY JAB SAW



- Dual ground tooth design makes fast clean cuts
- Thin blade design reduces friction and is great for tight cuts
- For use on drywall, wood, plastic
- Comfort grip cushioned handle



Part#	Size	Desc.	Handle Style
G05183	6"	Utility Jab Saw	Cushion Grip Handle

## WOOD HANDLE | UTILITY JAB SAW



- Dual ground tooth design makes fast clean cuts
- For use on drywall, wood, plastic
- Contoured wood handle



Part#	Size	Desc.	Handle Style
G05143	6"	Utility Jab Saw	Wood Handle

## 9" DRYWALL SANDING DISK



- Replacement sanding discs for most all rotary sanders
- Long lasting grit and wear



Part#	Desc.	Quantity
G25640	Sanding Disks - 80 Grit	15 per pack
G25641	Sanding Disks - 100 Grit	15 per pack
G25642	Sanding Disks - 120 Grit	15 per pack
G25643	Sanding Disks - 150 Grit	15 per pack
G25644	Sanding Disks - 180 Grit	15 per pack
G25645	Sanding Disks - 220 Grit	15 per pack



## VORTEX RADIAL SANDER



- Free spinning head with protective rubber bumper will not mark or damage the surface allowing you to sand right up to the corner or ceiling
- Hook covered back will accept any velco® backed sanding materials
- Disk is 9inch diameter and fits other radial sanding disks
- Includes male threaded adaptor

Part#	Desc.
G25638	Vortex Radial Sander

**Goldblatt**  
TOOLS



## DUST FREE SANDER



- Designed to virtually eliminate dust when attached to a standard shop-vac
- Cushioned rubber grip prevents slipping and improves grip
- Quick change spring steel clips make screen changes fast and secure
- Fits most all standard die-cut sandpaper
- Adjustable air flow control valve

Part#	Desc.
G05138	Dust Free Hand Sander

**Goldblatt**  
TOOLS



## PRO-GRIP HANDLE | PRO HAND SANDER



- Cushioned rubber grip prevents slipping and improves grip
- Quick change spring steel clips make screen changes fast and secure
- Fits most all standard die-cut sandpaper

Part#	Desc.	Handle Style
G05443	Pro Hand Sander	Pro-Grip Handle

**Goldblatt**  
TOOLS



## WOOD HANDLE | HAND SANDER

**Goldblatt**  
TOOLS



- Heavy duty aluminum body with a smooth solid wood handle
- Strong clamps for holding all standard die-cut sandpaper and screens over a soft foam rubber pad.



Part#	Desc.	Handle Style
G05447	Hand Sander	Wood Handle

## PLASTIC HANDLE | HAND SANDER



- Sturdy plastic base and handle with aluminum clamps
- Holds all standard die cut, sandpaper and screens over a soft foam

Part#	Desc.	Handle Style
G05445	Plastic Hand Sander	Plastic Handle

## PRO POLE SANDER

**Goldblatt**  
TOOLS



- Light weight pole sander
- Lightweight hammer-end metal handle with comfort grip pad
- Polished aluminum head with rubber pad
- Quick change spring steel clips make screen changes fast and secure
- Fits most all standard die-cut sandpaper



Part#	Size	Desc.	Handle Style
G15350	48"	Aluminum Pole Sander	Padded Metal Handle
G15353	48"	Aluminum Pole Sander	Wood Handle
G15354		Pole Sander Head	Head Only
G15323	48"	Padded Metal Handle	Handle Only
G16340	5ft	Wood Handle	Handle Only



## BLUE PLASTIC | POLE SANDER HEAD



- Sturdy plastic swivel head
- Attaches to any standard size broom handle
- Accepts all standard die cut sandpaper and screens

Part#	Desc.
G15355	Plastic Pole Sander Head - Blue

## DUAL GRIT | SANDING SPONGE

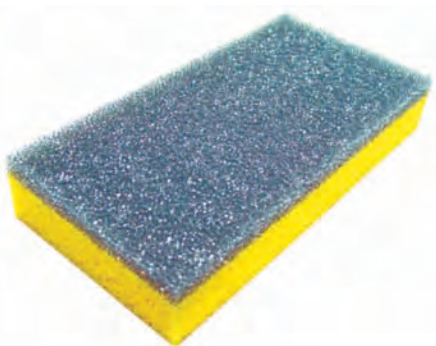


- Dual grit design
- Long Lasting and self cleaning
- Can sand flat surfaces as well as mold to any contour
- Can be used on a variety of materials and surfaces



Part#	Desc.
G05400	Dual Grit Sanding Sponge

## DRYWALL SCRUB SPONGE



- Dual use design for desired results
- Ideal for dust elimination and level 5 finishes
- Simply clean by rinsing out with water



Part#	Size	Desc.
G05606	5" X 7"	Drywall Scrub Sponge



## FLOOR SCRAPER



- Heavy duty all steel floor scraper with 6' (1.8m) steel handle
- Reinforced blade mount.
- Firm but flexible carbon steel blade to get debris off the floor

Part#	Size	Desc.
G06719	8" Blade / 6ft. Handle	Floor Scraper
G06720	18" Blade / 6ft. Handle	Floor Scraper

**Goldblatt**  
TOOLS



## REPLACEMENT BLADE | FLOOR SCRAPER



- All steel blade

Part#	Size	Desc.
G06723	8"	Replacement Blade
G06724	18"	Replacement Blade

**Goldblatt**  
TOOLS



## CROWS FOOT TEXTURE BRUSH



- White tampico fibers
- Over all size is 8.5 in. x 13.5 in.
- Accepts most standard threaded handles

Part#	Desc.
G05260	Single Crows Foot Texture Brush
G05261	Double Crows Foot Texture Brush

**Goldblatt**  
TOOLS



## TEXTURE/STIPPLING BRUSH



- Combination horse hair and fiber bristles
- 6" Diameter pattern area
- Can be used by hand or mounted to a standard threaded handle



Part#	Size	Desc.
G05116	6" Diameter	Stippling Brush

## CELLULOSE | TEXTURE SPONGE

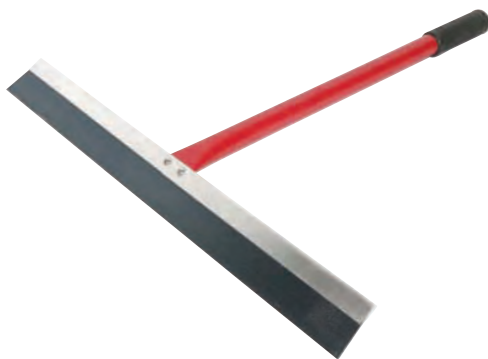


- Made of durable cellulose for long life
- Turtle back shape maintains even when wet to conform to your hand



Part#	Desc.
G05600	Cellulose Texture Sponge

## BLUE STEEL | KNOCKDOWN KNIFE



- 24 in. flexible blue steel blade
- Stiff aluminum spine ensures blade straightness
- 24 in. long handle to give you the reach and angle you need for the ceiling



Part#	Size	Desc.
G05500	24"	Blue Steel Knockdown Knife

## SURE GRIP FOLDING LOCK BACK UTILITY KNIFE

**Goldblatt**  
TOOLS



- Lightweight anodized aluminum handle with metal clip
- Patented quick-change mechanism, no tools required
- Fixed blade for more powerful cutting
- Accepts all standard utility blades



Part#	Desc.
G05402	Sure Grip Folding Lock back utility knife

## HEAVY DUTY FOLDING LOCK BACK UTILITY KNIFE WITH STORAGE

**Goldblatt**  
TOOLS



- Patented quick-change mechanism, no tools required
- Fixed blade for more powerful cutting
- Thumb rest
- Heavy duty aluminum handle



Part#	Desc.
G05403	Heavy Duty Folding Lock back utility knife with storage

## TWIST OPEN RETRACTABLE UTILITY KNIFE

**Goldblatt**  
TOOLS



- Die-cast aluminum body
- Easy blade change, no tools required
- 3 SK5 blades storage capacity
- Hinge mechanism for easy link



Part#	Desc.
G05404	Twist Open retractable utility knife



## FIXED BLADE UTILITY KNIFE

**Goldblatt**  
TOOLS



- Die-cast zinc body with knurling anti-slip grip
- Strong interlocking nose allows more pressure to be applied
- Built-in spring mechanism for easy open
- Twist-open designed, no tools required
- Hinge mechanism for easy links



Part#	Desc.
G05405	Fixed Blade utility knife

## LUXURY BOX BEAM LEVEL WITH MAGNET

**Goldblatt**  
TOOLS



- Rubber end caps protect against shock when dropped or bumped
- Advanced structural aluminum and frame for maximum durability and lightweight
- Impact-resistant solid block vials
- Top read window for convenience
- V-groove working edge fits on pipe or conduit
- Comfort grips for ease of handling
- Rare-earth magnets inside



Part#	Size	Desc.
G05406	24"	24" Luxury Box Beam Level with Magnet
G05407	48"	48" Luxury Box Beam Level with Magnet

## DRYWALL 4-IN-1 HANGING TOOL

**Goldblatt**  
TOOLS



- Aluminium body
- Multi functions
- Utility knife, Phillips screwdriver, screw supporter, keyhole saw, striking end, sanding rasp



Part#	Desc.
G05411	Drywall 4-in-1 Hanging tool

## HEAVY DUTY CAULK GUN



- Skeleton frame for easy loading
- Tip cutter and puncture wire included
- Rotation mechanism for easy using
- Pressure release valve
- Comfort grip

Part#	Size	Desc.
G05840	9"	Heavy Duty Caulk Gun
G05841	13"	Heavy Duty Caulk Gun



## MEDIUM DUTY CAULK GUN



- No-drip for less mess and less waste, smoother application
- Hex smooth red style
- Puncture wire & tip cutter included

Part#	Size	Desc.
G05839	9"	Medium Duty Caulk Gun



## RATCHET CAULK GUN



- Ratchet rod style
- Comfortable pistol grip
- Puncture wire & tip cutter included

Part#	Size	Desc.
G05836	9"	Ratchet Caulk Gun





## STANDARD SKELETON CAULK GUN



- No drip caulk gun
- Heavy duty caulk gun
- Puncture wire & tip cutter included

Part#	Size	Desc.
G05838	9"	Standard Skeleton Caulk Gun



## STANDARD CAULK GUN



- All metal construction
- Comfortable pistol grip
- OPP quality without puncture wire and tip cutter

Part#	Size	Desc.
G05837	9"	Standard Caulk Gun



## QUART SIZE CAULK GUN



- All metal construction
- Comfortable pistol grip
- Puncture wire & tip cutter included

Part#	Size	Desc.
G05835	13"	Quart Size Caulk Gun



## PRO-GRIP HANDLE

### | DOUBLE EDGE WOOD SCRAPER

**Goldblatt**  
TOOLS



- Scrape any surface without gouging
- Extremely durable
- Double edge blade
- Easy grip knob



Part#	Size	Desc.	Handle Style
G05816	2.5"	Double Edge Wood Scraper	Pro-Grip Handle

## PRO-GRIP HANDLE

### | DOUBLE EDGE WOOD SCRAPER

**Goldblatt**  
TOOLS



- Scrape any surface without gouging
- Extremely durable
- Double edge blade
- Easy grip knob



Part#	Size	Desc.	Handle Style
G05815	1.5"	Double Edge Wood Scraper	Pro-Grip Handle
G05814	1"	Double Edge Wood Scraper	Pro-Grip Handle

## DOUBLE EDGE WOOD SCRAPER



- Blade can be resharpened
- Double edge blade
- Can be used for most surface preparations

Part#	Size	Desc.
G05817	1"	Double Edge Wood Scraper
G05818	1.5"	Double Edge Wood Scraper
G05819	2.5"	Double Edge Wood Scraper

**Goldblatt**  
 TOOLS

## PRO-GRIP HANDLE | HEAVY DUTY BENT SCRAPER



- Heavy duty bent scraper removes carpeting and floor tile
- Use with paint remover or heat gun to remove peeling or caked paint
- Carbon steel blade
- Threaded handle end



Part#	Size	Desc.	Handle Style
G05820	3"	Heavy Duty Bent Scraper	Pro-Grip Handle

## PRO-GRIP HANDLE | WALL SCRAPER



- Angled head provides clean shaving cutting action, perfect for stripping floors, walls, and wallpaper
- Features three blade clamp screws for maximum blade holding power and flexgrip anti-fatigue vinyl hand grip
- Blade can be replaced
- Handle hold extra blades



Part#	Size	Desc.	Handle Style
G02117	4"	Wall Scraper	Pro-Grip Handle

## PRO WINDOW SCRAPER



- Durable construction
- Razor blade can be replaced

**Goldblatt**  
 TOOLS


Part#	Desc.
G05807	4in Pro Window Scraper

## DIY WINDOW SCRAPER



- Ideal for scraping paint from windows, mirrors, tiles and other flat surfaces
- Utility blade can be replaced

Part#	Desc.
G05806	DIY Window Scraper

## GLASS SCRAPER



- All-metal construction
- Push/pull action locks blade in place
- Retracts for safe storage of blade
- Extra 5 blades included

Part#	Desc.
G05810	Safety Scraper with Blades



## ADJUSTABLE UTILITY KNIFE



- Lightweight aluminium body
- Retractable button for easy use and storage

Part#	Desc.
G05811	Adjustable Utility Knife



## 5 PC UTILITY KNIFE BLADE



- Ideal for cutting thick, dense sheet materials
- Fits all standard utility knives
- Include 5 blades

Part#	Desc.
G05808	5 Pc Utility Knife Blade

**Goldblatt**  
TOOLS



## 100 PACK RAZOR BLADES



- Single edge razor blade
- Include 100 blade

Part#	Desc.
G05809	100 Pack Razor Blades

**Goldblatt**  
TOOLS



## SURE GRIP | HD LOCK BACK UTILITY KNIFE



- Lightweight anodized aluminium handle with metal clip
- Patented quick-change mechanism, no tools required
- Fixed blade for more powerful cutting
- Accepts all standard utility blades

Part#	Desc.	Handle Style
G05402	HD Lock Back Utility Knife	Sure Grip

**Goldblatt**  
TOOLS



## HEAVY DUTY FOLDING UTL. KNIFE



- Patented quick-change mechanism, no tools required
- Fixed blade for more powerful cutting
- Thumb rest
- Heavy duty aluminium handle

Part#	Desc.
G05403	Heavy Duty Folding Utility Knife

**Goldblatt**  
TOOLS



## SNAP-OFF RAZOR KNIFE



- Plastic body, with rubber grip
- Positive blade auto lock
- Removable blade snapper included in cap of knife
- 2 extra blade stored inside handle
- Blade change: snap end cap

Part#	Size	Desc.
G05812	9mm	9MM Snap-off Razor Knife
G05813	18mm	18MM Snap-off Razor Knife

**Goldblatt**  
TOOLS



## GLASS CUTTER



- Made of zinc die cast
- Use for general cutting

Part#	Desc.
G05823	Glass Cutter

**Goldblatt**  
TOOLS



## DUAL PURPOSE WINDOW TOOL

**Goldblatt**  
TOOLS



- Comfortable grip handle
- V-shaped end packs, shapes and trims new putty.
- Flat end removes putty

Part#	Desc.
G05822	Dual Purpose Window Tool

## NARROW STRIPPING BRUSH

**Goldblatt**  
TOOLS



- Soft grip handle
- Steel wire bristles for strength

Part#	Desc.
G05827	Narrow Stripping Brush

## PAINT STRIPPING BRUSH

**Goldblatt**  
TOOLS



- Soft grip wide handle
- Plastic bristles

Part#	Desc.
G05826	Paint Stripping Brush



## BRASS WIRE BRUSH



- Soft grip handle
- Copper wire bristle for strength

Part#	Desc.
G05828	Brass Wire Brush

## STAINLESS STEEL WIRE BRUSH



- Soft grip handle
- Stainless steel wire bristles for strength

Part#	Desc.
G05829	Stainless Steel Wire Brush

## WIRE BRUSH / SCRAPER



- Remove dirt, paint, rust & scale
- Tough steel scraper
- Extended Soft-Grip handle
- Stainless steel wire bristle

Part#	Desc.
G05824	Wire Brush / Scraper

**Goldblatt**  
 TOOLS

## SHOE SANDLE BRUSH



- Removes paint, rust, dirt and grease with ease
- Steel wire bristles for strength
- Extended hard wood handle



Part#	Desc.
G05831	Shoe Sandal Brush

## WIRE BRUSH SHOE HANDLE

**Goldblatt**  
 TOOLS


- Removes paint, rust, dirt and grease with ease
- Steel wire bristles for strength
- Extended Soft-Grip handle



Part#	Desc.
G05825	Wire Brush Shoe Handle

## WIRE BRUSH WITH SCRAPER



- Remove dirt, paint, rust & scale
- Tough steel scraper
- Extended hard wood handle
- Stainless steel wire bristle

Part#	Desc.
G05830	Wire Brush with Scraper

## SPIRAL MIXER



- Powerful auger action
- Rust-resistant
- Durable, electroplated carbon steel
- Protective bottom ring design

Part#	Size	Desc.
G15405	2"	Spiral Mixer
G15420	4"	Spiral Mixer

## TRIPLE EDGE KNIFE



- Light weight
- Durable plastic construction
- Combination tool for applying drywall joint compound

Part#	Desc.
G05802	Triple Edge Knife

## PAINT PAIL OPENER



- Solid one piece construction
- Opens plastic containers quickly and easily without damaging the lids
- Use on virtually any plastic container

Part#	Desc.
G05803	Paint Pail Opener



**Goldblatt**  
 TOOLS

## BRUSH AND ROLLER CLEANER



- Ergonomic grip
- Brass-plated and solid steel nail setting head
- High-carbon steel blades
- Blade extends through handle
- Handle hole for easy hanging



Part#	Desc.
G05804	Brush and Roller Cleaner

## PRYBAR / SCRAPER

**Goldblatt**  
 TOOLS


- Prying bar designed for strength and durability
- Contoured bar makes pulling nails, prying, lifting and scraping easier
- Forged high-carbon steel
- Nail slot for easy nail removal



Part#	Desc.
G05801	Prybar / Scraper

## PRO-GRIP SOFT HANDLE | JOINT KNIFE

**Goldblatt**  
 TOOLS


- Pro-Grip soft handle
- Hammer end-cap
- Full length tang will not loosen
- Polished carbon steel
- Precision ground blade



Part#	Size	Desc.	Handle Style
G05264	1.5"	Joint Knife-flex	Pro-Grip Soft Handle
G05266	2"	Joint Knife-flex	Pro-Grip Soft Handle
G05268	3"	Joint Knife-flex	Pro-Grip Soft Handle
G05270	4"	Joint Knife-flex	Pro-Grip Soft Handle
G05271	5"	Joint Knife-flex	Pro-Grip Soft Handle
G05272	6"	Joint Knife-flex	Pro-Grip Soft Handle

## PRO-GRIP SOFT HANDLE | PUTTY KNIFE-STIFF



- Pro-Grip soft handle
- Hammer end-cap
- Full length tang will not loosen
- Polished carbon steel

Part#	Size	Desc.	Handle Style
G05273	1.5"	Putty Knife-Stiff	Pro-Grip Soft Handle
G05274	3"	Putty Knife-Stiff	Pro-Grip Soft Handle
G05277	4"	Putty Knife-Stiff	Pro-Grip Soft Handle

## PLASTIC HAMMER END | KNIFE



- Carbon steel putty knife with plastic hammer end
- Precision ground blade for ideal flex and hammer end feature for setting popped nails

Part#	Size	Desc.	Handle Style
G24121	1.5"	Polished Carbon Steel	Hammer End Handle
G24122	2"	Polished Carbon Steel	Hammer End Handle
G24123	3"	Polished Carbon Steel	Hammer End Handle
G24124	4"	Polished Carbon Steel	Hammer End Handle
G24125	5"	Polished Carbon Steel	Hammer End Handle
G24126	6"	Polished Carbon Steel	Hammer End Handle

## PLASTIC HAMMER END | KNIFE



- Stainless steel putty knife with plastic hammer end
- Precision ground blade for ideal flex and hammer end feature for setting popped nails

Part#	Size	Desc.	Handle Style
G24221	1.5"	Stainless Steel-Flex	Hammer End Handle
G24222	2"	Stainless Steel-Flex	Hammer End Handle
G24223	3"	Stainless Steel-Flex	Hammer End Handle
G24224	4"	Stainless Steel-Flex	Hammer End Handle
G24226	6"	Stainless Steel-Flex	Hammer End Handle



## ALL PLASTIC JOINT KNIFE



- Durable
- Lightweight and flexible plastic
- Disposable

Part#	Size	Desc.
G09104	1.5"	All Plastic Joint Knife
G09105	2"	All Plastic Joint Knife
G09106	3"	All Plastic Joint Knife
G09107	4"	All Plastic Joint Knife
G09110	6"	All Plastic Joint Knife
G09111	8"	All Plastic Joint Knife
G09112	10"	All Plastic Joint Knife



## 3-PACK PLASTIC PUTTY KNIVES



- Durable
- Lightweight and flexible plastic
- Disposable

Part#	Size	Desc.
G05805	2", 4", 6"	3-Pack Plastic Putty Knives



## DIY PUTTY KNIFE - FLEX



- Lightweight handle
- Carbon steel blade
- Precision ground blade
- The hole for easy hanging

Part#	Size	Desc.
G24302	1.5" width	Putty Knife Flex
G24305	3" width	Putty Knife Flex
G24306	4" width	Putty Knife Flex
G24308	6" width	Putty Knife Flex



## DIY PUTTY KNIFE - STIFF



- Lightweight handle
- Carbon steel blade

Part#	Size	Desc.
G24309	1.5" width	Putty Knife Stiff
G24310	3" width	Putty Knife Stiff
G24311	4" width	Putty Knife Stiff

## PRO-GRIP SOFT HANDLE

### | 9-IN-1 PAINTERS TOOL



- Pro-Grip soft handle
- Hammer end-cap
- Full length tang will not loosen
- Polished carbon steel
- 9 tools in 1



Part#	Size	Desc.	Handle Style
G05275	9-in-1	9-in-1 Painters Tool Pro-Grip	Pro-Grip Soft Handle

## PRO-GRIP SOFT HANDLE

### | 5-IN-1 PAINTERS TOOLS PRO-GRIP



- Pro-Grip soft handle
- Hammer end-cap
- Full length tang will not loosen
- Polished carbon steel
- 5 tools in 1



Part#	Size	Desc.	Handle Style
G24115	5-in-1	5-in-1 Painters Tools Pro-Grip	Pro-Grip Soft Handle

## 6-IN-1 PAINT TOOL



- Ergonomic grip hammer end cap
- High-carbon steel blades
- Blade extends through handle
- Handle hole for easy hanging
- 6-in-1 tool



Part#	Size	Desc.
G05834	6-in-1	6-in-1 Paint Tool

## PRO-GRIP SOFT HANDLE

### | CLIPPED JOINT KNIFE



- Pro-Grip soft handle
- Hammer end-cap
- Full length tang will not loosen
- Polished carbon steel
- Precision ground blade



Part#	Desc.	Handle Style
G05263	Clipped Joint Knife	Pro-Grip Soft Handle

## PRO-GRIP SOFT HANDLE

### | PIE-SHAPED JOINT KNIFE



- Pro-Grip soft handle
- Hammer end-cap
- Full length tang will not loosen
- Polished carbon steel
- Precision ground blade



Part#	Desc.	Handle Style
G05262	Pie-Shaped Joint Knife	Pro-Grip Soft Handle

## PRO-GRIP HANDLE | NOTCH TROWEL

**Goldblatt**  
TOOLS



- Pro-Grip handle
- Stainless steel blade
- Heavy duty aluminum mounting

Part#	Size	Desc.	Handle Style
G02378	1/8"x1/8"x1/8"	SQ-Notch Trowel	Pro-Grip Handle
G02361	1/4"x1/4"x1/4"	SQ-Notch Trowel	Pro-Grip Handle
G02362	1/4"x3/8"x1/4"	SQ-Notch Trowel	Pro-Grip Handle
G02379	3/8"x3/8"x3/8"	SQ-Notch Trowel	Pro-Grip Handle
G02377	1/2"x1/2"x1/2"	SQ-Notch Trowel	Pro-Grip Handle
G02363	3/16"x5/32"	V-Notch Trowel	Pro-Grip Handle
G02364	1/4"x3/16 "	V-Notch Trowel	Pro-Grip Handle
G02365	1/2"x1/2 "	V-Notch Trowel	Pro-Grip Handle
G02384	1/4"x3/8"x1/4"	U-Notch Trowel	Pro-Grip Handle
G02383	1/4"x1/4"x1/4"	U-Notch Trowel	Pro-Grip Handle
G02385	1/2"x1/2"x1/2"	U-Notch Trowel	Pro-Grip Handle

## PRO-GRIP HANDLE | SQUARE NOTCH TROWEL

**Goldblatt**  
TOOLS



- Ideal for mixing, scooping, spreading and cleaning
- High carbon steel blade
- Tough yet flexible
- Ergonomic Pro-Grip Handle

Part#	Size	Desc.	Handle Style
G02108	1/4"X1/4"X1/4"	SQ-Notch Trowel	Pro-Grip Handle



## PRO-GRIP HANDLE

## | V-NOTCH TROWEL



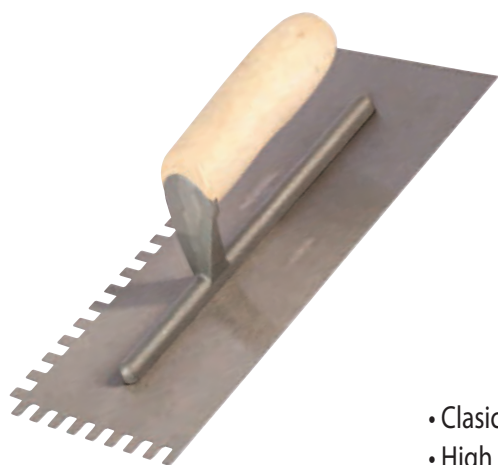
- Ideal for mixing, scooping, spreading and cleaning
- High carbon steel blade
- Tough yet flexible
- Ergonomic Pro-Grip Handle

**Goldblatt**  
TOOLS


Part#	Size	Desc.	Handle Style
G02109	3/16"x5/32"	V-Notch Trowel	Pro-Grip Handle

## WOOD HANDLE

## | NOTCH TROWEL



- Classic wood handle
- High carbon steel blade
- Aluminum mounting

**Goldblatt**  
TOOLS


Part#	Size	Desc.	Handle Style
G02375	1/8"x1/8"x1/8"	SQ-Notch Trowel	Wood Handle
G02372	1/4"x1/4"x1/4"	SQ-Notch Trowel	Wood Handle
G02373	1/4"x3/8"x1/4"	SQ-Notch Trowel	Wood Handle
G02374	1/2"x1/2"x1/2"	SQ-Notch Trowel	Wood Handle
G02376	3/8"x3/8"x3/8"	SQ-Notch Trowel	Wood Handle
G02360	1/2"x1/2"	V-Notch Trowel	Wood Handle
G02133	1/4"x3/16"	V-Notch Trowel	Wood Handle
G02134	3/16"x5/32"	V-Notch Trowel	Wood Handle
G02380	1/4"x1/4"x1/4"	U-Notch Trowel	Wood Handle
G02381	1/4"x3/8"x1/4"	U-Notch Trowel	Wood Handle
G02382	1/2"x1/2"x1/2"	U-Notch Trowel	Wood Handle



## PLASTIC HANDLE

## | NOTCH TROWEL



- Light weight plastic handle
- Carbon steel blade
- Anti-rust coating

Part#	Size	Desc.	Handle Style
G02391	1/4"x3/8"x1/4"	SQ-Notch Trowel	Plastic Handle
G02392	1/4"x1/4"x1/4"	SQ-Notch Trowel	Plastic Handle
G02656	1/2"x1/2"x1/2"	SQ-Notch Trowel	Plastic Handle
G02658	1/4"x5/16"x5/16"	Flat-V Notch Trowel	Plastic Handle
G02659	3/16"x1/8"	Flat-V Notch Trowel	Plastic Handle
G02660	3/16"x1/4"x5/16"	V-Notch Trowel	Plastic Handle
G02662	1/4"x3/16"	V-Notch Trowel	Plastic Handle
G02663	3/16"x5/32"	V-Notch Trowel	Plastic Handle
G02651	1/8"x1"/16"x3/32"	U-Notch Trowel	Plastic Handle
G02653	1/16"x1/16"x1/16"	U-Notch Trowel	Plastic Handle
G02654	1/8"x1/8"x3/32"	U-Notch Trowel	Plastic Handle
G02650	1/16" SQ & 1/16"x1/32"x1/32" U	Notch Trowel	Plastic Handle
G02657	3/16" & 3/32" SQ	Notch Trowel	Plastic Handle

## PLASTIC HANDLE

## | LEVELING TROWEL



- Economy design
- Light weight use
- Plastic construction

Part#	Size	Desc.	Handle Style
G09130	9-1/2" x 4-1/2"	Leveling Trowel	Plastic Handle





## NOTCHED TROWELS



- Galvanized steel
- Adhesive spreader

Part#	Size	Desc.
G02652	6"x4-1/2"	Notched Trowels

## PRO-GRIP HANDLE | CUTTING



- Ideal for cutting wall and small floor tile
- Score and snap tile up to 1/4" thick
- High quality carbide scoring wheel



Part#	Desc.	Handle Style
G02010	Handheld Tile Cutter	Pro-Grip Handle

## PRO-GRIP HANDLE | COMPOUND NIPPERS



- Great for use on porcelain and ceramic tile
- High performance nipper that requires less force
- Pro-Grip grip non-slip handle



Part#	Desc.	Handle Style
G02009	Pro Compound Nippers	Pro-Grip Handle



## PRO-GRIP HANDLE

## | TILE NIPPERS



- Great for softer materials like marble and stone
- High quality carbide tips for long life
- Pro-Grip non-slip handle

**Goldblatt**  
TOOLS


Part#	Desc.	Handle Style
G02008	HD Tile Nipper	Pro-Grip Handle

## PRO-GRIP HANDLE

## | GLASS TILE NIPPERS



- Used for nipping and shaping glass tiles
- Two opposed carbide scoring wheels
- Pro-Grip, non-slip handle

**Goldblatt**  
TOOLS


Part#	Desc.	Handle Style
G02007	Glass Tile Nippers	Pro-Grip Handle

## CARBIDE HOLE SAW



- Used for cutting holes for plumbing pipes
- Carbide tipped masonry pilot bit
- Fit 3/8" drive drills

**Goldblatt**  
TOOLS


Part#	Size	Desc.
G02005	1-3/8"	Carbide Hole Saw

## PRO-GRIP HANDLE

## | CARBIDE ROD SAW

**Goldblatt**  
 TOOLS


- Cutting shapes in the center of the tile
- Includes 6" rod saw and pilot masonry bit
- Blade is easy to remove and replace
- 4" neck opening allows for large cuts

Part#	Size	Desc.	Handle Style
G02001	6"	Rod Saw Kit	Pro-Grip Handle
G02003	6"	Rod Saw Blade	N/A

## TILE CUTTER

**Goldblatt**  
 TOOLS


- Lightweight, compact and easy to use
- Reinforced steel base with rubber padded non-slip surface
- The homeowners choice for floor and wall projects
- Cutting wheel can be replaced

Part#	Size	Desc.
G02601	14"	Tile Cutter

## TILE CUTTER

**Goldblatt**  
 TOOLS


- Lightweight, compact and easy to use
- Reinforced steel base with rubber padded non-slip surface
- The homeowners choice for floor and wall projects
- Cutting wheel can be replaced

Part#	Size	Desc.
G02602	20"	Tile Cutter

## TILE CUTTER



- Heavy duty aluminum base will not break, crack or chip
- Reinforced steel base with rubber padded non-slip surface
- The professionals choice for floor and wall projects
- Cutting wheel can be replaced

Part#	Size	Desc.
G02603	20"	Pro Tile Cutter

**Goldblatt**  
TOOLS


## PROFESSIONAL TILE CUTTER WITH CASE



- Lightweight wide die cast aluminum alloy base
- Extra thick dual chrome-plated rugged steel guide rods
- Soft rubber & EVA pads prevent tiles from shifting
- Linear ball bearing slides for smooth scoring
- Double injection soft handle
- Hard plastic case



Part#	Size	Desc.
G02604	26"	Tile Cutter with Case

**Goldblatt**  
TOOLS


## 2" PRECISION FLOORING SAW



- Voltage: 120V ~ 60 Hz
- Power: 2.8 A
- No load speed: 4000 rpm
- Blade size: 50mm
- Cutting depth: 0 to 12.7mm
- Lock-off switch
- Plastic case
- 3 Blades included

Part#	Size	Desc.
G02094	2"	Mini Saw

**Goldblatt**  
TOOLS






## 4" PRO FLOORING SAW



- Voltage: 120v ~ 60 Hz
- Power: 4A
- No load speed: 5500 rpm
- Max blade diameter: 4" ~ 4 3/8"
- Arbor size: 7/8" (20mm for wood/ soft metal cutting blade, 22.2mm for diamond blade)
- Max cutting depth: in wooden: 1"  
in aluminium 1/16"
- Soft grip handle & auxiliary handle for comfort
- Lock-off switch
- Dust diameter: 1-1/4" (31mm)
- 1pc TCT 105mm blade
- 1pc 105mm diamond blade

Part#	Size	Desc.
G02095	4"	Mini Saw

## PRO-GRIP HANDLE

### | MARGIN FLOATS

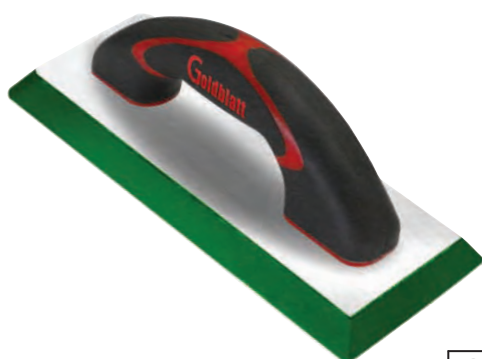


- High quality non-stick gum rubber base
- Use with sanded or non-sanded grout
- Pro-Grip non-slip handle

Part#	Size	Desc.	Handle Style
G02368	6"	Margin Floats	Pro-Grip Handle



## EPOXY FLOAT

**Goldblatt**  
 TOOLS


- Comfortable Pro-Grip handle
- Sturdy construction
- Molded rubber base
- Solid aluminum back plate



Part#	Size	Desc.	Handle Style
G02371	9x4	Epoxy Float	Pro-Grip Handle

 PRO-GRIP HANDLE  
 | GROUT FLOATS

**Goldblatt**  
 TOOLS


- Comfortable Pro-Grip handle
- Solid aluminum back plate
- Rubber base with foam backing



Part#	Size	Desc.	Handle Style
G02370	9x4	Grout Floats	Pro-Grip Handle

 PLASTIC HANDLE  
 | RUBBER FLOATS

**Goldblatt**  
 TOOLS


- Light weight
- Sturdy construction
- Molded rubber pad
- Multiple uses



Part#	Size	Desc.	Handle Style
G03295	8 x 4	Molded Rubber Float	Plastic Handle



## PLASTIC HANDLE | FLOATS



- Ergonomic plastic handle
- Basic foam pad
- Aluminum back plate

Part#	Size	Desc.	Handle Style
G02369	9 x 4	Economy Floats	Plastic Handle

## FLOOR SCRAPER



- 14" Scraper has foot push bracket
- Heavy duty design
- Handles are 5' long



Part#	Size	Desc.
G02104	14"	Floor Scraper

## FLOOR SCRAPER



- Heavy gauge steel
- Pre punched for proper alignment



Part#	Size	Desc.
G02105	14"	Replacement Blade
G06723	8"	Replacement Blade



## FLOOR SCRAPER



- 5ft steel handle
- 8" blade
- Blade can be replaced



Part#	Size	Desc.
G06719	8"	Floor Scraper

PLASTIC HANDLE  
| SCRAPER

- 12" Long comfort grip handle
- 4" Replacable blades
- Compartment of spare blades in inside handle



Part#	Size	Desc.	Handle Style
G02117	12" L	Wall Scraper - 4" Blade	Plastic Handle

## SCRAPER BLADES



- 4" single sided replacement blade



Part#	Size	Desc.
G02114	4"	10 Pack 4" Wall Scraper Blades

## GROUT CLEANING BRUSH

**Goldblatt**  
TOOLS



- For cleaning excess grout out of porous stone
- Stiff plastic bristles will not mark the surface



Part#	Desc.
G02118	Grout Brush

## CHEESE CLOTH

**Goldblatt**  
TOOLS



- Made of 100% cotton
- Used to wipe down grouted tile



Part#	Desc.
G02093	Cheese Cloth

## GROUT SPONGE

**Goldblatt**  
TOOLS



- Professional extra large premium sponge for grouting and clean up



Part#	Desc.
G02090	Grout Sponge

## GROUT SCRUB SPONGE



- Professional extra large premium sponge for grouting and clean up
- Standard sponge and coarse scrub sides

Part#	Desc.
G02089	Grout Scrub Sponge

**Goldblatt**  
TOOLS



## HEAVY DUTY GROUTING GLOVES



- Protects hands from the corrosive action of grout, chemicals and other harsh substances
- 100% heavy duty latex is puncture and tear resistance
- Pliable, tough and long wearing

Part#	Desc.
G02098	Heavy Duty Rubber Grouting Gloves

**Goldblatt**  
TOOLS



## GROUT BAG



- Rugged nylon-infused PVC
- Pliable and easy to use
- Removable metal tip makes using and cleaning bag easy
- Ideal for masonry, stone, and tile applications
- Strong, molded seams

Part#	Desc.
G07113	Grout Bag

**Goldblatt**  
TOOLS





**Goldblatt**  
 TOOLS

## PRO-GRIP HANDLE

### | GROUT SAW



- Carbide edged saw
- Ideal for removing old grout when regrouting
- Non-slip Pro-Grip handle



Part#	Desc.	Handle Style
G02505	Grout Saw with Blade	Pro-Grip Handle

## GROUT SAW REPLACEMENT BLADES



- 1 Replacement blades for G02505
- Used with most grout saws



Part#	Desc.
G02506	Grout Saw Replacement Blades

## PRO-GRIP HANDLE

### | GROUT REMOVAL



- High quality reversible carbide tip
- Ideal for removing excess thinset or old grout
- Non-slip Pro-Grip handle



Part#	Desc.	Handle Style
G02404	Grout Removal Tool W/Tri Carbide Tip	Pro-Grip Handle

**Goldblatt**  
 TOOLS

## GROUT APPLICATOR



- Quick and easy application of grout sealer
- No mess, neat application, and no dripping

Part#	Desc.
G02091	Grout Sealer Bottle



## WAX MARKING PENCILS



- Marks most surfaces with easy clean-up
- Dual color for light and dark tile

Part#	Desc.
G02100	Wax Marker



## PLASTIC HANDLE

## | CARBIDE SCORING TOOL



- Used for scoring underlayment and backer board
- Tri-Tip design with two scoring tips and one chisel tip

Part#	Desc.	Handle Style
G02101	Carbide Backboard Scoring Knife	Plastic Handle



## 10" CONTOUR GAUGE

**Goldblatt**  
TOOLS



- Used to easily transfer a mirror image of irregular shape to tiles for a perfect fit
- Integrated ruler



Part#	Size	Desc.
G02102	10"	Plastic Contour Gauge

## BACKER BOARD JOINT TAPE

**Goldblatt**  
TOOLS



- Adhesive-backed tape attaches quickly
- Fiberglass mesh grips thinset
- Will not tear, shrink, stretch or bubble



Part#	Size	Desc.
G02099	2" x 50'	Mesh Tape

## TILE RUB STONE

**Goldblatt**  
TOOLS



- Used to smooth and dress down rough edges
- Dual grit design: medium and fine
- Can be used wet or dry



Part#	Desc.
G02121	Tile Rubbing Stone



## RUBBER Mallet



- White head will not mark surface
- Durable wood handle



Part#	Desc.
G02106	Rubber Mallet

## TILE SUCTION LIFTING CUP



- Suction pad for secure grip
- Works great on several materials
- Comfort plastic grip



Part#	Desc.
G02092	Suction Cups

## PRO-GRIP HANDLE

## | CARBIDE TILE FILE



- Used to shape and refine tile shapes
- Flat and curved side for all shapes
- Soft grip comfort handle



Part#	Desc.	Handle Style
G02122	Carbide Tile File	Pro-Grip Handle

## WOOD HANDLE

## | LINOLUM KNIFE



- Heavy duty knife
- Hardwood handle
- Tempered and holed high carbon steel blade

Part#	Desc.	Handle Style
G02096	Linolium Knife	Wood Handle

**Goldblatt**  
TOOLS


## PRO-GRIP HANDLE

## | UNDER CUT SAW



- Ideal for cutting door jambs or any flush cuts
- Double ground tooth design for fast, clean cuts
- Reversible Pro-Grip Handle

Part#	Desc.	Handle Style
G02103	Saws	Pro-Grip Handle

**Goldblatt**  
TOOLS


## TILEJAX UNIVERSAL SPACERS



- 4x's faster
- Reusable for multiple jobs
- Works with all tile sizes
- Designed for X, T, & Y patterns
- Made with 100% recycled material
- Re-sealable bag

Part#	Size	Desc.
G02671	3/16"	Tilejax
G02670	1/8"	Tilejax
G02672	1/4"	Tilejax

**Goldblatt**  
TOOLS


## TILE SPACERS

**Goldblatt**  
 TOOLS


- For fast, accurate tile installation and alignment with professional results
- Use for even grout lines and tile spacing
- TPR material for durability use



Part#	Size	Qty.
G02128	3/16"	500
G02124	1/16"	1250
G02126	1/8"	1000
G02123	1/16"	300
G02130	1/4"	400
G02132	3/8"	250
G02131	3/8"	50
G02129	1/4"	100
G02127	3/16"	150
G02125	1/8"	200

## INSTALL AND REPAIR KIT

**Goldblatt**  
 TOOLS


- 8pc Install kit bucket of tools:  
(Float, 1/4 spacers, sponge, gloves, 1/4 SQ. trowel, nippers, instruction sheet)

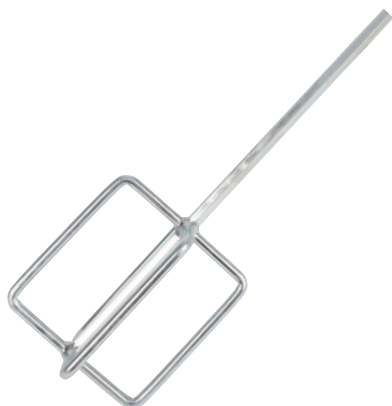


Part#	Desc.
G02715	Bucket of Tools Sprs 8Pcs Install Kit



## DOUBLE BOX MIXER

**Goldblatt**  
TOOLS



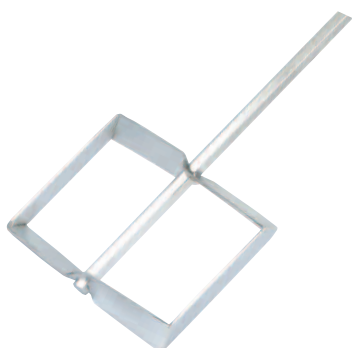
- Ideal for mixing all flooring materials
- Designed to minimize air entrapment in mix
- Used with a 1/2" drill with low RPMs



Part#	Desc.
G02111	Double Box Mixer

## WESTERN STYLE MUD MIXER

**Goldblatt**  
TOOLS



- Cold rolled steel mixer with a 3/8 shaft
- Blade angles list and fold compound to a consistent even texture
- Ideal for mixing joint compound, acoustic texture, paints and other types of similar material



Part#	Desc.
G15314	Western Style Mud mixer



If any Goldblatt hand-tool fails  
to deliver professional results,  
return it for a full money-back refund.



---

15785 South Keeler Terrace Olathe, KS 66062

Tel: (877)-876-7562

Fax: (913)-631-2622

Email: [sales@goldblatttool.com](mailto:sales@goldblatttool.com)

[www.goldblatttool.com](http://www.goldblatttool.com)